

Drafting and Making 3-D Envelope Pouches

Carol A. Brown

An *envelope pouch* is a simple pouch with a flap for closure. Velcro® near the edge of the flap and on the pouch front will keep the contents secure. The flap can cover the full height of the pouch or can extend just enough below the opening of the pouch to allow for the Velcro® closure; I decide on the flap variation depending on the embroidery I have in mind: (a) On a small pouch, I embroider on a full height flap, as there is not enough room for an embroidery design below the Velcro® on the pouch front. (b) For a large pouch, I can put a large design on the pouch front and a shorter design, like a name, on the flap.

The original envelope pouches work well for relatively flat items like laptop computers, graphics tablets, internet tablets, smart phones, and external CD or floppy disk drives. For more bulky items, such as a box of crayons or a lunch bag, you may want to box the bottom corners of the pouch. Slight variations in drafting the pattern and in construction order make that possible.

These instructions will guide you through drafting your pattern, embroidering your fabric, and constructing your pouch. Please read about both methods of construction before beginning your project. Method One is suitable only when the top of the back portion of the pouch is slanted. All pouches can be made with Method Two.

Determine Dimensions for Pouch Pattern:

To draft your pattern you need three dimensions of what you plan to put in the pouch: width, height, and depth. Choose which dimension of your contents you want for the width of your pouch opening; that will be the pouch width. If embroidery is a consideration, think of the shape of the space that will be available for the design you choose. Also think of ease of access for your contents; with a vertical crayon box pouch, I would have to remove the box from the pouch to reach the crayons.

The chart below shows the dimensions for a crayon box pouch and for a lunch bag. It also includes blank lines for planning your own pouches. Remember to add in seam allowances as directed.

Measurement Chart										
Contents	Dimensions of Contents			Width of Pouch	Height of Pouch Sections				Height of Pouch	Location of Design
	Width	Height	Depth		Front	Bottom	Back	Flap		
Crayons	8-1/2"	5"	1-5/8"	11"	3-1/2"	1-5/8"	3-1/2"	7-3/4"	18-3/8"	flap
Lunch	7"	10"	7"	15"	10"	7"	10"	4"	33"	front

Follow these instructions to determine the size of your pattern based on the dimensions for your device or other contents. *Italic text (sometimes parenthesized) provides sample calculations.*

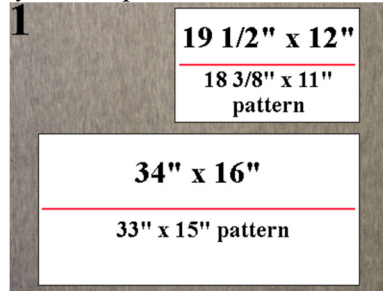
1. **Width of Pouch = Width of Contents + Depth of Contents** + wiggle room + 1" for seams. If you want your contents to fit snugly, add 1/8" to 1/4" for wiggle room (or more if fleece lined).
 - a. *My crayon box is 8-1/2" wide. My crayon box is 1-1/2" deep and I will add 1/8" wiggle room. That measurement can be used in Step 3; however, 1/2 of this measurement needs to be added at each side of the pattern. I do not have a ruler with 1/16" measurements so have to use 1/8" increments. If I added 7/8" at each side, I would be adding 1-3/4" in all; the pouch would be too loose. If I add 3/4" at each side, the pouch would be too tight. To compensate, I plan to start with 3/4" at each side and move the needle a few clicks to the right for each side seam (1/16"). The total Width of Pouch for the crayon box pouch is $8\frac{1}{2}'' + 1\frac{1}{2}'' + 1'' = 11''$.*
 - b. *For my lunch bag, I wanted to get my fingers around the sides of a plastic food container inside. I added 3/4" wiggle room to my 6-1/4" container for a total of 7". The depth is also 7" for the same reason. The total Width of Pouch for the lunch bag is $7'' + 7'' + 1'' = 15''$.*
2. **Pouch Front Height.** Measure the height of the item you wish to contain. Decide how much of it you want to cover with fabric.
 - a. *My crayon box front is 5" high but I only want fabric to come up to the opening of the box. The Pouch Front will be 3-1/2".*
 - b. *The height of the front of the lunch bag is 10". This height is much larger than the contents; I want to be able to close the bag with food containers inside.*
3. **Pouch Bottom = Depth of Contents** + desired wiggle room.
 - a. *My crayon box is 1-1/2" deep. With wiggle room the total is 1-5/8".*
 - b. *For the lunch bag, the depth is 7", with 3/4" wiggle room added.*
4. **Pouch Back Height = Height of Contents** + desired wiggle room.
 - a. *The back of my crayon box is actually 5" high but I want the top of the back to end where the box lid hinges. I will add the remaining 1-1/2 to the flap length.*
 - b. *The back of my lunch bag is the same as the front, 10" high.*
5. Choose which flap version you want for your pouch:
 - a. For a full height flap, **Flap Height = Height of Contents** (or slightly less, as desired). (*My crayon box is 5" high but I want the flap to be 4-5/8" high.*)
 - b. If your **Pouch Flap** begins part way down the back of your pouch, you will need to add any remaining distance from the **Pouch Back** plus the **Pouch Depth** to your flap length. (*For my crayon box pouch I add $1\frac{1}{2}'' + 1\frac{5}{8}'' + 4\frac{5}{8}'' = 7\frac{3}{4}''$.*)
 - c. For a shorter flap, **Flap Height = 3 to 5"**, as desired. (*For my lunch bag, Flap Height = 4".*)
6. **Height of Pouch = Pouch Front Height + Pouch Bottom + Pouch Back Height + Flap Height + 2"** for hems.
 - a. *For my CD Drive pouch, $3\frac{1}{2}'' + 1\frac{5}{8}'' + 3\frac{1}{2}'' + 7\frac{3}{4}'' + 2'' = 18\frac{3}{8}''$.*
 - b. *For my lunch bag, $10'' + 7'' + 10'' + 4'' + 2'' = 33''$.*

Draft Pouch Pattern:

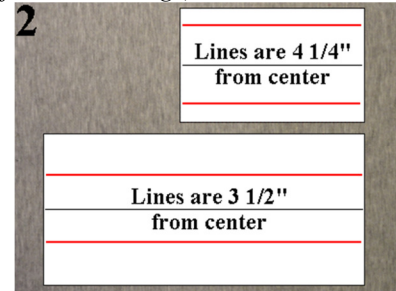
In this section, I show illustrations for drafting the full flap **crayon box pouch** and short flap **lunch bag** versions of the envelope pouch with boxed corners. Instructions are for both pouches unless stated otherwise. In the photographs for this section, the line(s) being added to the pattern for the current step are shown in **red**. Previously-drawn lines are **black**.

1. Cut a piece of pattern drafting material at least 1" wider than **Pouch Width** and 1" longer than **Pouch Height**. (*19-1/2" x 12" for crayon box pouch and 34" x 16" for lunch bag.*)

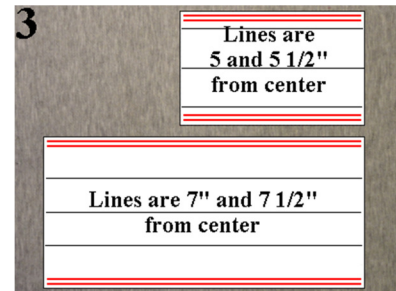
2. Draw a line at the center of the pattern tracing material, parallel to the longer dimension of the material. (*My lines are 6" from the side edge for the crayon box pouch and 8" from the side edge for the lunch bag.*) (Fig. 1)



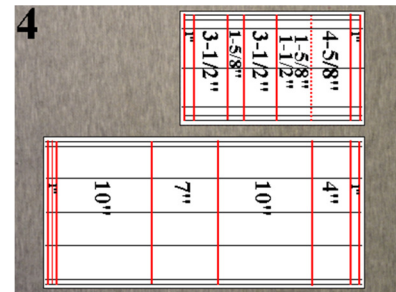
3. Draw a line parallel to the center line 1/2 the **Pouch Width** measurement away from the center line. Draw another parallel line on the other side of the center line as well, spaced the same distance from center. (*My lines for the crayon box pouch are 4-1/4" from center. My lines for the lunch bag are 3-1/2" from center.*) (Fig. 2)



4. Draw lines parallel to and spaced 1/2 **Pouch Depth** away from the lines you drew in Step 3. Draw additional parallel lines 1/2" away from these lines. These will be seam and cutting lines, respectively. (*My lines for the crayon box pouch are 4-1/4" + 3/4" = 5" and 5-1/2" from center. My lines for the lunch bag are 3-1/2" + 3-1/2" = 7" and 7-1/2" from center.*) (Fig. 3)

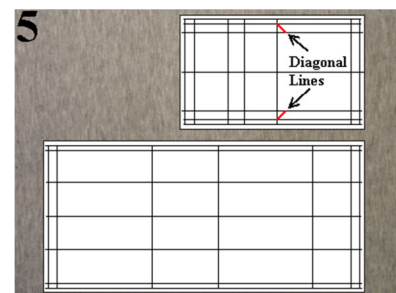


5. Spaced 1/2" from one short end of the pattern drafting material, draw a line perpendicular to the center line. Draw another line parallel to the first, and 1" toward the center to create a hem allowance.



6. For the lunch bag, draw a line parallel to and 1/2" away from the first line you drew in Step 5. You will use this line as the cutting line for Method Two construction shown below.

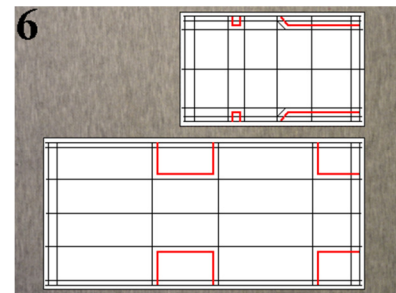
7. Following the measurements in the chart, draw additional lines spaced as needed for **Pouch Front**, **Pouch Bottom**, **Pouch Back**, and **Pouch Flap**. Draw one more line 1" beyond the last line for the remaining hem allowance.



8. If you followed Step 5.b of the Dimensions section, also draw a line to show where the actual flap begins. (You will need this line for centering a design on the flap.)

9. Figure 4 shows the spacing of these lines for the two pouches.

10. For the crayon box pouch, add a diagonal line starting at the intersection of the side seam line and the top of the **Pouch Back** and ending at the edge of the adjacent **Pouch Width Front**. The height of the triangle created by this line should be the same as the width. (*My diagonal lines end 3/4" above the top edge of the Pouch Back.*) (Fig. 5)



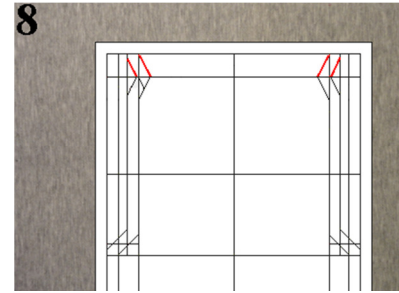
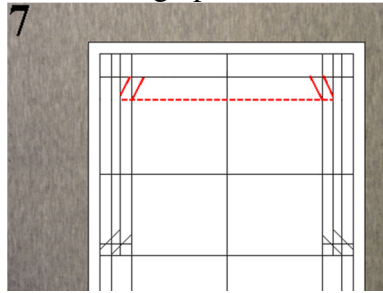
11. The **Pouch Bottom** and **Pouch Flap** sections are narrower than the **Pouch Front** and **Pouch Back**; they end at the lines that mark the sides of the **Pouch Front Width**.

12. Add 1/2" seam allowances to **Pouch Bottom** and **Pouch Flap** areas as shown in Figure 6.

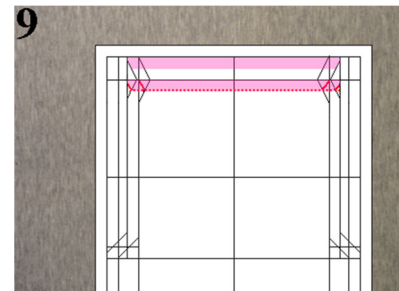
13. Optional: Slant the edges of the flap.

a. Turn your pattern so that the flap area is facing up.

b. Draw a broken line parallel to and 1" in from the hem line. On the hem line, make a mark 1/2" to 3/4" in from the side seam line. Draw a diagonal line from the drawn mark to the intersection of the broken line and the side seam line. Draw a parallel line 1/2" out from this diagonal line. Repeat these lines on the other side of the flap. (Fig. 7)

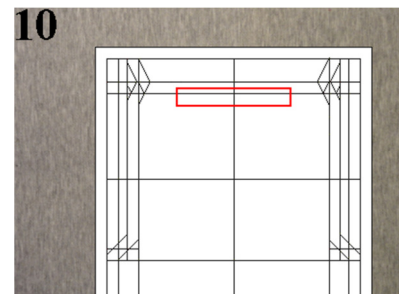


c. Fold the pattern at the hem line. Trace the seam lines and outer edges onto the hem area of the pattern. Unfold pattern. (Fig. 8)

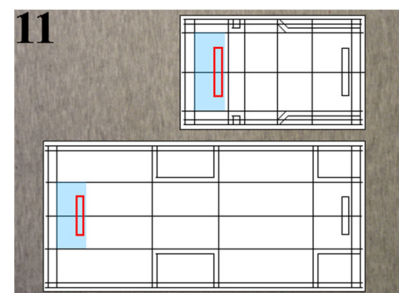


d. Draw a dotted line 1/2" in from the hem line. Fold the pattern at this dotted line. Trace the seam lines and outer edges onto the area between the dotted line and the hem line. (Fig. 9)

e. NOTE: The outer fabric will be cut the full length of the pattern, but with the small "wings" from Step 13.d folded out of the way. The lining will be cut with the hems folded out of the way but the wings extended. The two layers will be sewn together with a 1/2" seam; thus the outer 1/2" of the lining needs to match that of the outer fabric. These areas are shaded pink in Figure 9 so you can see that they match.



14. Beginning 1/4" inside the hemline of the **Flap**, mark the location for a strip of Velcro®. Choose a length at least 1-1/2" shorter than the width of the Flap. Keeping away from the seam allowances will make it easier to stitch the Velcro® in place later. Draw a rectangle centered on the center line of the pouch. (My Velcro® is 3/4" wide. I used a 5" long piece for the crayon box pouch and a 4" long piece for the lunch bag. Both pieces are positioned 1/4" away from the hem line.) (Fig. 10)



15. Mark the location for the second piece of Velcro®:

- a. **Full Length Flap.** The lower edge of the Velcro® is 1/4" above the bottom of the **Flap**. If your flap will cover the entire front of your pouch, trace the Velcro® rectangle 1/4" above the line that marks the bottom of the Pouch Front. If you made your Flap a little shorter, add the difference in height to the 1/4". Be sure to center the rectangle on the pattern. (My crayon box pouch **Flap** is 4-5/8" high, 3/8" less than the 5" height of the **Pouch Front**. I will trace my Velcro® rectangle 1/4" + 3/8" = 5/8" above the bottom of the **Pouch Front**.)
- b. **Short Flap.** The lower edge of the Velcro® is 1/4" above the bottom of the **Flap**. Subtract 1/4" from the length of the **Flap**. Trace the Velcro® rectangle so that the bottom edge is that distance from the top of the **Pouch Front**. Be sure to center the rectangle on the pattern. (My

lunch bag Flap is 4" high. The bottom edge of the Velcro® will be $4" - 1/4" = 3-3/4"$ from the top of the Pouch Front.)

- c. In Figure 11, the portions of the **Pouch Fronts** that are covered by the **Flaps** are shaded in blue.
16. Mark horizontal centering lines for embroidery:

a. **Full Length Flap.** Add $1/4"$ to the width of your Velcro®. Subtract this total from the height of the front portion of your **Flap**. Draw your horizontal centering line half this total from the top edge of the **Flap**. *(For my crayon box pouch Flap I calculate $4-5/8"$ Flap Height - $(3/4"$ Velcro® width + $1/4"$ from Velcro® to edge of Flap) = $3-5/8"$ for embroidery. My centering line will be $1-3/4"$ from the top of the **Flap** ($1/16"$ higher than center, to give larger bottom margin).*

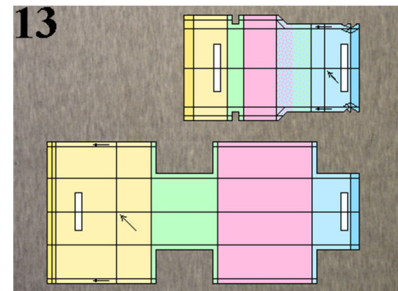
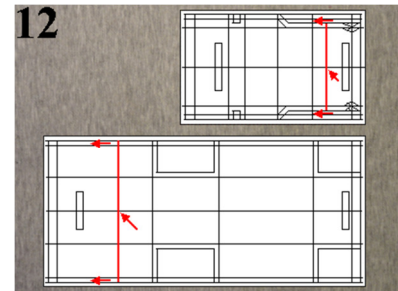
b. **Short Flap.** Subtract the height of the Flap from the height of the Pouch Front. Draw your horizontal centering line half this total from the bottom edge of the Pouch Front. If the distance doesn't come out even, make the centering line slightly higher. *(For my lunch box, I subtract $10"$ Pouch Front - $4"$ Flap = $6"$ for embroidery. My centering line will be $3"$ from the bottom of the **Pouch Front**.)*

c. Figure 12 shows the centering lines added to the patterns. Arrows in the seam allowances show the direction in which the design will be stitched. The arrows point to the top of the embroidery.

d. Your design should fit within the vertical space as measured and between the side seams.

17. Cut out pattern, making sure to include the extensions at the hem line.

18. Figure 13 shows the complete patterns. The **Pouch Front**, **Pouch Bottom**, **Pouch Back**, and **Pouch Flap** are shaded to match the related measurements from the Measurement Chart. The bi-colored portions of the **Pouch Flap** represent the portions of the **Pouch Back** and **Pouch Top** that are built into it.

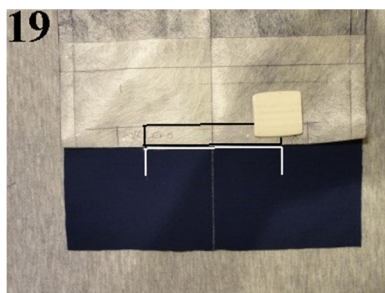
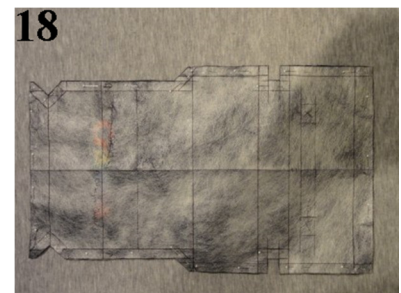
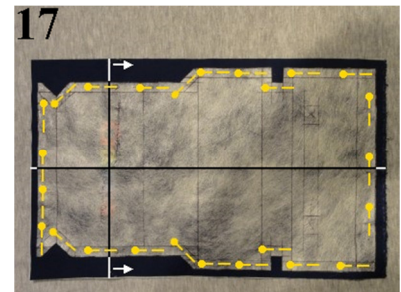
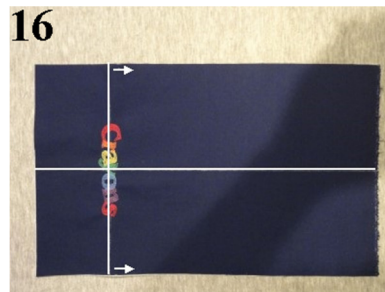
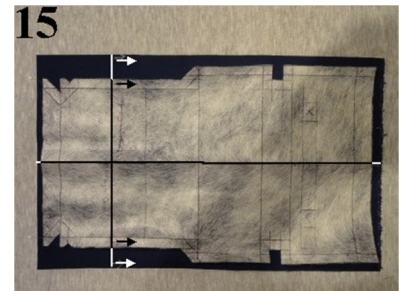
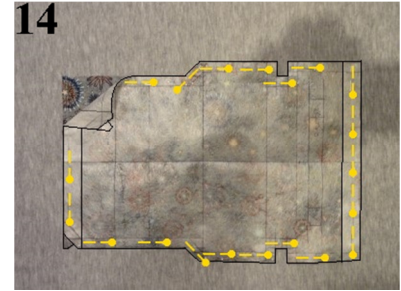


Supplies:

- Outer Fabric. Poplin, denim, or other sturdy fabric. 1" (or more) larger than pattern in both directions.
- Fusible fleece OR fusible interfacing. Same as for Outer Fabric.
- Lining. Quilt fabric or other colorful plain weave fabric, or Ripstop nylon for lunch bag. Same as for Outer Fabric.
- Optional: Thermal fleece for lunch bag. Same as for Lining. (If you use Thermal fleece, fuse interfacing to the back of the outer fabric before embroidering.)
- Embroidery stabilizer.
- Embroidery threads as needed for desired design(s).
- Embroidery bobbin thread.
- Regular sewing thread.
- Snag-Free Velcro®, $3/4"$ or 1" wide, enough for two pieces as determined in Step 14 of **Draft Pouch Pattern** section.
- Marking pen or chalk whose marks can be removed from fabric.

Prepare, Embroider, and Cut Pattern Pieces:

1. Place the **Pouch** pattern on the lining fabric, keeping pattern on grain. If the fabric has a directional print, put the **Flap** end at the top of the print. Fold the hems out of the way. Pin in place. Cut out pattern. (Fig. 14)
2. Fuse fleece OR interfacing to the wrong side of the Outer Fabric.
3. With chalk or a pen whose marks can be removed, mark a Centering line parallel to the long direction of the fabric and halfway across.
4. Place the Envelope Pouch pattern on the fabric, aligning the center line of the pattern with the marked line on the fabric. Make sure the entire pattern fits within the fabric. (Fig. 15)
5. Make a mark on the fabric where it meets the horizontal centering line on the pattern. Remove the pattern. Draw a line that includes this mark, perpendicular to the vertical centering line already marked.
6. Draw an arrow near the edge of the fabric to show which way the top of the design should face. (Fig. 15)
7. Repeat for locations of other embroideries, if any.
8. Embroider your design(s), locating each where intended on the fabric. Make sure the designs face the direction you intended. (Fig. 16)
9. Place the Envelope Pouch pattern on the fabric, aligning the center line of the pattern with the marked line on the fabric. Also align the horizontal center line of the pattern with the horizontal line marked on the fabric. Pin in place, tucking the wing extensions for the lining at the top of the **Flap** out of the way. (Fig. 17)
10. Cut out pattern. (Fig. 18)
11. For **Pouch Front** Velcro® located at least 1-3/4" away from the cut edge, mark the location on the fabric. Unpin the pattern at the top of the **Pouch Front** past the location of the Velcro®. Fold the pattern back at the lower edge of the Velcro® rectangle. On the fabric, mark the bottom and sides of the rectangle. (Fig. 19)
12. Refold the pattern at the top edge of the Velcro® rectangle. Mark the line on the fabric. (Fig. 20)
13. Velcro® that is closer to the edge will be attached later, after the lining is attached.



Construction Method One:

1. All seam allowances are 1/2" unless otherwise noted. Back stitch at start and end of seams to secure stitching.

2. If you marked the location for Velcro®, stitch the Velcro® in place on the right side of the fabric. (Fig. 21)

3. Turn the outer **Pouch** wrong side up. On each short end, mark a line parallel to the raw edge and 2" away. (Fig. 22)

4. Fold the raw edges up to meet the marked lines. Pin in place and press creases. (Fig. 23)

5. Let the creases fall open.

6. Fold the outer **Pouch** right sides together so that the raw edges of the cut out corners area aligned. Pin the side seams. Do the same for the lining. (Fig. 24)

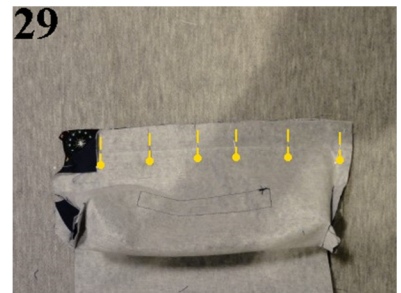
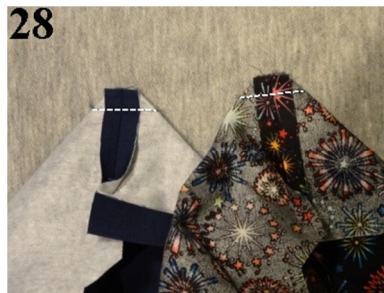
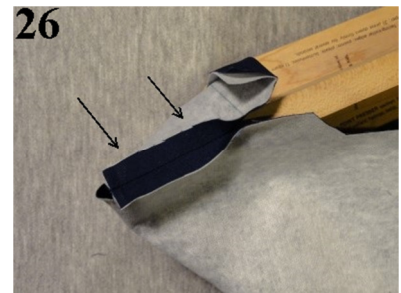
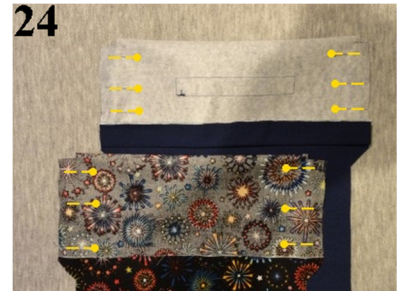
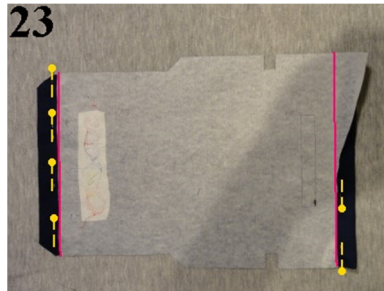
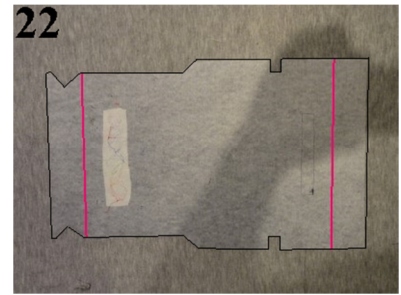
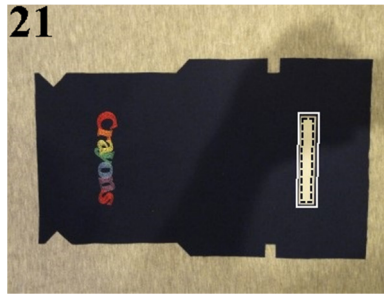
7. Stitch the bottom portion of each seam, leaving about 2-1/2" at the top of the seam unstitched. (NOTE: Remember to scoot the needle to the right if you need the extra width in your pouch.) Backstitch at start and end of seams. (Fig. 25)

8. Press seams open or toward the back of the pouch. Also press the seams on the lining open or toward the back of the pouch. Figure 26 shows a seam pressed open. It turns out that both seams allowances will be hidden between the lining and the back of the pouch at the top part of the side seams. Pressing the seams open gives you less bulk at the corner seams but you will have a twist in the seam allowances part way up the sides. You may choose which option you prefer.

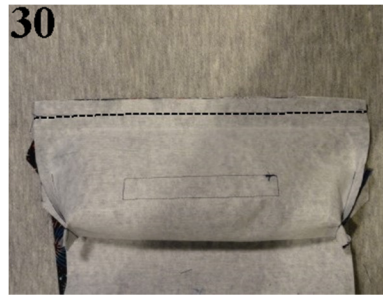
9. Refold the corners of the outer pouch so that the corner raw edges are aligned and the side seam is centered on one layer of the fabric. Pin in place. Repeat for the lining. (Fig. 27)

10. Stitch 1/2" seams, even if you scooted the needle for the side seams. (Fig. 28)

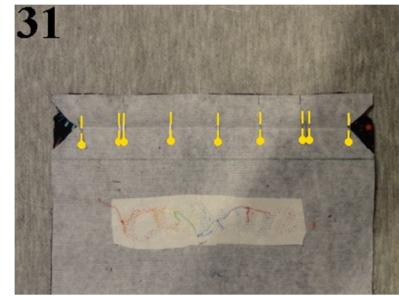
11. Place the outer pouch and lining right sides together at the top edge of the **Pouch Front**. Align edges and pin together. (Fig. 29)



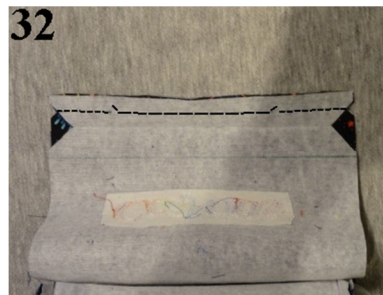
12. Stitch the seam. (Fig. 30)



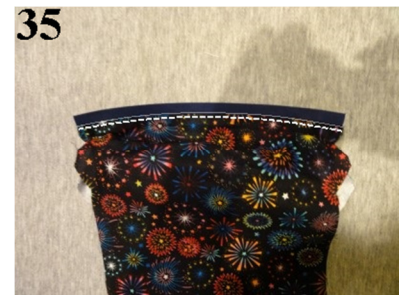
13. Place the outer **Pouch** and lining right sides together at the top edge of the **Flap**. Align edges and pin together. About 1" from each side, place two pins very close together. (Fig. 31)



14. Begin stitching the seam. When you come to the first pair of pins, back stitch. Set your machine for a basting stitch and stitch to the second pair of pins. Return to normal stitch length. Back stitch and then stitch to the end of the seam. Snip top and bottom threads at the start and end of the basted section of the seam. (Fig. 32)



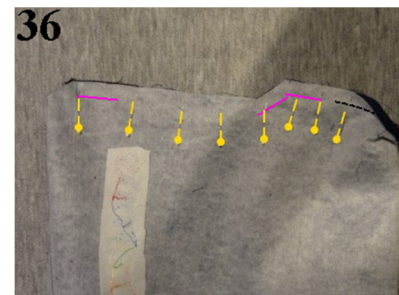
15. Turn the **Pouch** right side out.



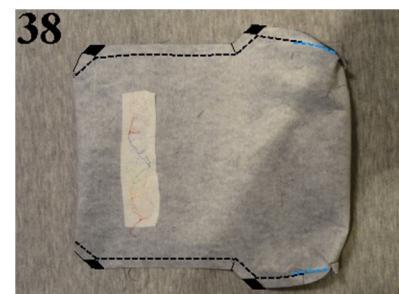
16. Press seam allowances toward the linings on both seams. Avoid pressing out the hem creases. (Fig. 33 and 34)

17. At the top of the **Pouch Front**, fold the pouch at the crease. With the lining side facing up, top stitch just below the seam. (Fig. 35)

18. If you have not yet added Velcro® to the **Pouch Front**, do so now. Mark a line parallel to the top crease and spaced as you determined when drafting your pattern. Make a vertical mark at the center of the Pouch Front. Also mark the center of the Velcro®. Center the Velcro® at your marks and stitch in place. See Step 28 for illustration. Remove all marks.



19. Turn the **Pouch** wrong side out. Adjust the fabric so that the **Flap** hem crease is at the very top and the raw edges at the sides are aligned. Pin the seams, making sure that all layers are even at the part of the pouch already stitched. To make it easier to know when to pivot, mark the seam allowances where the stitching changes direction. (Fig. 36)



20. Turn **Pouch** over. Make sure the seam allowances at the top of the **Flap** are lying flat. (Fig. 37)

21. Stitch seams. Scoot the needle to the right only at the pocket part of the pouch. Continue the stitching until you overlap the previous stitching by at least 1/2". Clip inner corners and trim off outer corners. (Fig. 38)

22. Press outer **Pouch** seam allowances open. (Fig. 39)
23. Remove the basting from the **Flap** seam. (Fig. 40)
24. Turn **Pouch** right side out through the opening.
25. Sharpen corners with a point pressing tool. Press flat. Use washable glue or pins to hold the top fold of the lining in place on the inside of the **Flap**. (Fig. 41)
26. With the lining side facing up, top stitch just below the seam. (Fig. 42)
27. On the lining side of the **Flap**, mark a line parallel to the top crease and 1/4" away. Mark a vertical line at the center of the **Flap** at the top edge. Mark the center of your second piece of Velcro®. Center the Velcro® on the **Flap** so that the top edge is at the marked line. Stitch in place. (Fig. 43)
28. Remove all marks.
29. Place crayon box in **Pouch**, with opening facing out. (Fig. 44)
30. Figure 45 shows side view of crayon box in **Pouch**.
31. Figure 46 shows front view.



Construction Method Two:

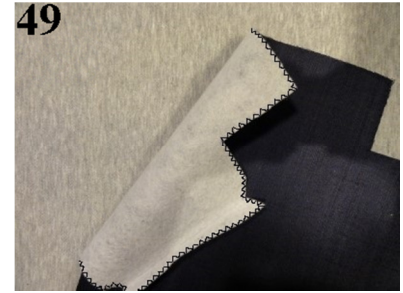
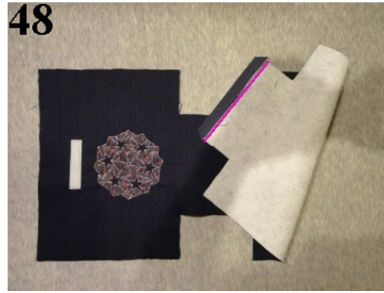
1. Fuse fleece or interfacing to the back of fabric, according to your project.
2. Mark centering lines for embroidery as for Construction Method One. Embroider design(s).
3. Pin pattern to embroidered fabric, aligning centering lines on pattern with those on the fabric. At the top edge of the Pouch Front, fold the pattern at the 1/2" cutting line. Tuck in the extensions near the edge of the **Flap**. Cut fabric.
4. Mark location for Velcro® and stitch in place. (Fig. 47)
5. If you use thermal fleece, cut it out separately and zigzag it to the edges of the outer **Pouch**. The Mylar side faces outward if you want to keep food cold. To keep food warm, place the Mylar side against the fabric.



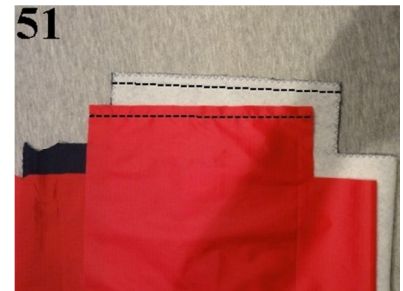
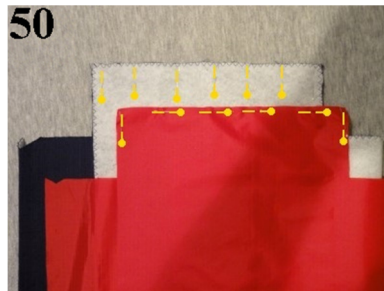
6. To cut lining, fold under 1/2" at the top edge of the **Pouch Front** and the 1" hem at the edge of the **Flap**. Pin in place on lining fabric. Cut fabric.

7. All seam allowances are 1/2" unless otherwise noted. Back stitch at start and end of seams to secure stitching.

8. Turn the outer **Pouch** wrong side up. At the **Flap** end, mark a line parallel to the raw edge and 2" away. Fold the raw edge up to meet the marked line. Pin in place and press crease. (Fig. 48)



9. If fabric ravels, finish raw edges with zigzag or other seam finishing stitch. Also do this for Method One pouches where necessary.) (Fig. 49)



10. Fold outer **Pouch** right sides in. Align the **Front** and **Back** at the side edges and pin in place. If you use Ripstop nylon for your lining, pin only within seam allowances. (Fig. 50)



11. Stitch the entire side seams. (Fig. 51)

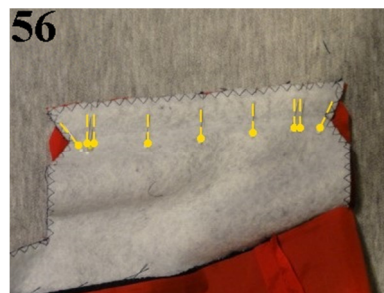
12. Press seam allowances open in lining and outer **Pouch**. (Fig. 52)

13. Refold the corners of the outer **Pouch** so that the corner raw edges are aligned and the side seam is centered on one layer of the fabric. Pin in place. Repeat for the lining. Stitch seams. (Fig. 53)



14. Turn outer **Pouch** right side out. Leave lining wrong side out. (Fig. 54)

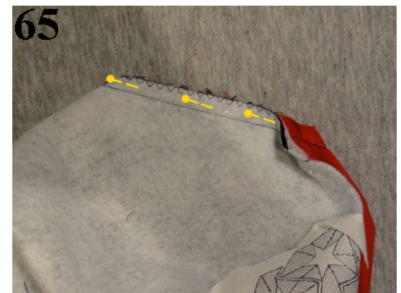
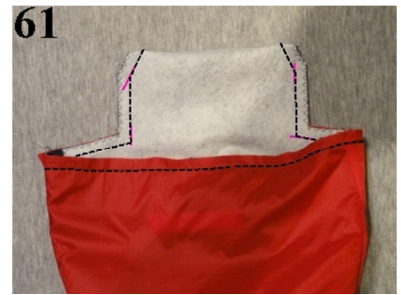
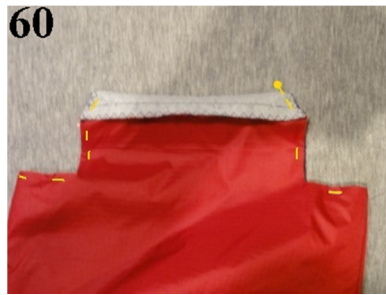
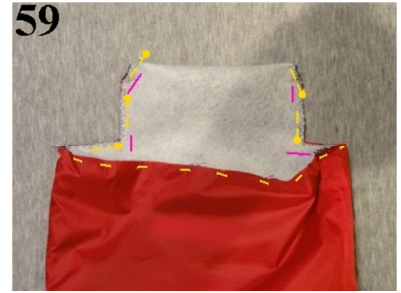
15. Tuck the outer Pouch inside the lining. Align raw edges. (Fig. 55)



16. Place the outer pouch and lining right sides together at the top edge of the **Flap**. Align edges and pin together. About 1" from each side, place two pins very close together. (Fig. 56)

17. Stitch seam as in Step 14 in Method One, basting in the area between the double pins. (Fig. 57)

18. Press seam allowances toward the linings. Avoid pressing out the hem crease. (Fig. 58)
19. Adjust the fabric so that the **Flap** hem crease is at the very top and the raw edges at the sides are aligned. Pin the seams. To make it easier to know when to pivot, mark the seam allowances where the stitching changes direction. (Fig. 59)
20. Turn the **Pouch** over. Make sure the seam allowances at the top of the **Flap** are lying flat. (Fig. 60)
21. With the outer **Pouch** facing up, stitch one continuous seam down one side of the **Flap**, around the top of the **Pouch**, and up the other side of the **Flap**. (Fig. 61)
22. Clip inner corners and trim off outer corners. (Fig. 62)
23. Press outer **Pouch** seam allowances open. (Fig. 63)
24. Pull the outer **Pouch** out from inside the lining. (Fig. 64)
25. On one side of the **Pouch**, bring the boxed corners of the lining and outer **Pouch** together. The seam at the outer edge of the **Pouch** will be tucked in between the boxed corners. Pin within seam allowance. (Fig. 65)
26. Turn **Pouch** over. (Fig. 66)
27. Bring the second pair of boxed corners together, tucking the rest of the **Pouch** in between the boxed corners. (Fig. 67)
28. Pin within seam allowances. (Fig. 68)
29. Stitch through all layers on each pair of boxed corners, stitching only within the seam allowances. This step will prevent the lining from coming out of the bag when you remove contents. The blue broken lines in Figure 69 represent the already stitched seams.
30. Remove the thread from the basted portion of the **Flap** seam. (Fig. 40)



31. Put one hand inside the Pouch. Grasp the bottom and pull through the opening to turn Pouch right side out. (Fig. 70)
32. Sharpen corners with a point pressing tool. Press flat. Use washable glue or pins to hold the top fold of the lining in place on the inside of the **Flap**. (Fig. 71)
33. With the lining side facing up, top stitch just below the seam. Continue top stitching along the edges of the **Flap** and opening. (Fig. 72)
34. On the lining side of the **Flap**, mark a line parallel to the top crease and 1/4" away. Mark a vertical line at the center of the **Flap** at the top edge. Mark the center of your second piece of Velcro®. Center the Velcro® on the flap so that the top edge is at the marked line. Stitch in place. (Fig. 73)
35. On each side of the **Pouch Front**, mark a line at the top edge, 1/2 the **Pouch Depth** from the side seam. (*My lunch bag is 7" deep so I mark lines 3-1/2" from the side seams.*) (Fig. 74)
36. Fold the Pouch Front from one mark at the top edge to the edge of the bottom corner seam that is directly below it. Press a crease. (Fig 75)
37. Repeat for the other mark.
38. Also press creases on the Pouch Back, using the edges of the Flap as your marks for the tops of the creases. (Fig. 76)
39. Press creases at the bottoms of the **Pouch Front** and **Pouch Back**.
40. Push the side seams inward so that the side creases line up. Close **Flap**.
41. Figure 77 shows the finished lunch bag. Fill with food and later enjoy your lunch!

