

Embroidered Scrap Bag and Bed Caddy

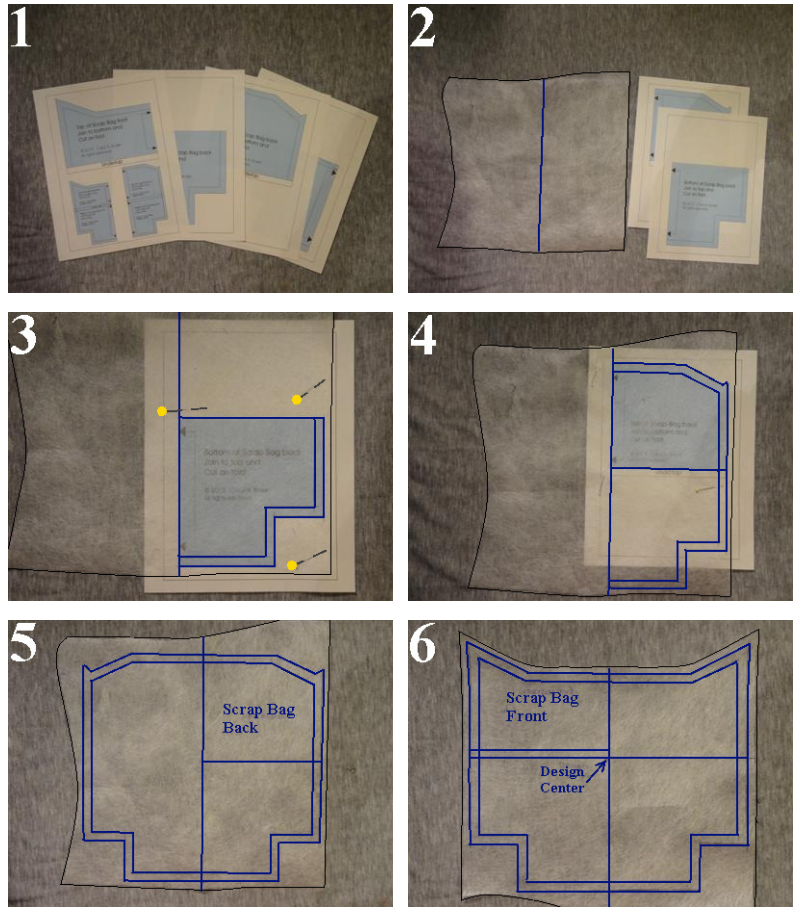
Carol A. Brown

Materials:

1. Outer fabric for **Scrap Bag** (sturdy fabric such as poplin): at least 12-1/2" wide by 22" high.
2. Outer fabric for **Bed Caddy** (sturdy fabric such as poplin): at least 10" wide by 19-1/2" high.
3. Medium weight fusible interfacing or fusible fleece: same size as for outer fabric.
4. Lining (quilt fabric or other cotton): same size as for outer fabric, or more if you want to match a print.
5. *Fancy Swirls* or *Medallion Swirls* design of your choice, 100mm x 100mm, 120mm x 120mm, or 150mm x 150mm size.
6. Embroidery thread: 1 to 6 colors, depending on design, plus embroidery bobbin thread.
7. Medium weight cutaway stabilizer: enough for embroidery hoop.
8. Regular sewing thread.
9. Removable marker or tailor's chalk (for right side of fabric).
10. Pattern tracing material.

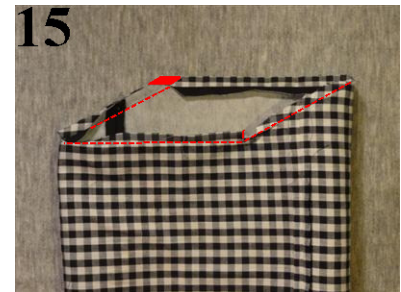
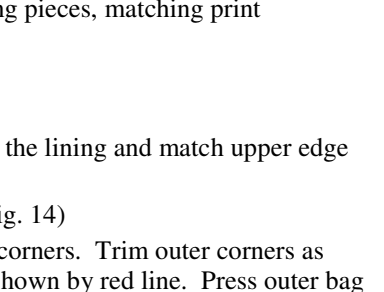
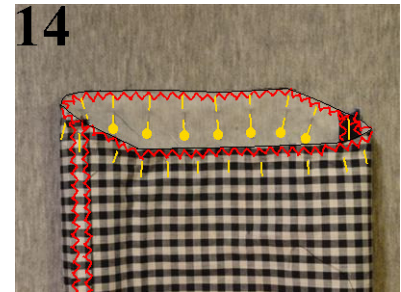
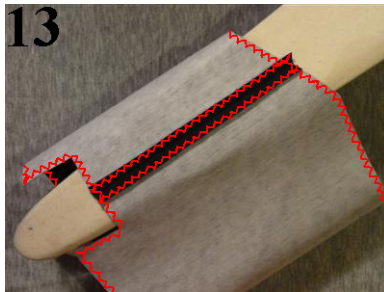
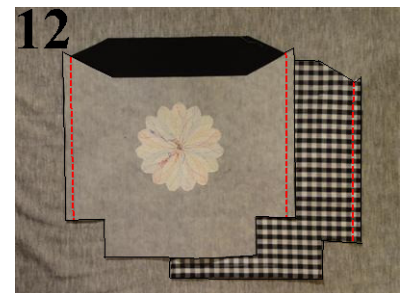
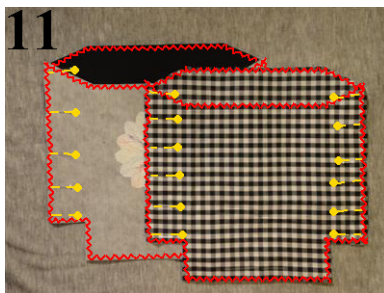
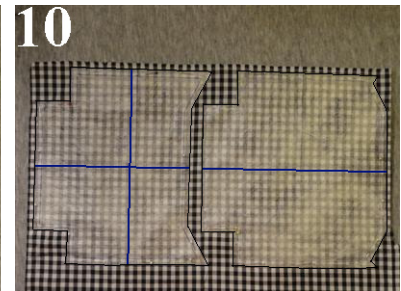
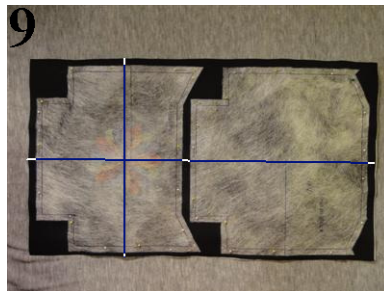
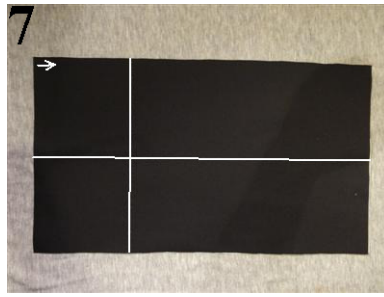
Prepare Pattern:

1. Print the **Scrap Bag** or **Bed Caddy** pattern at full size. (Fig. 1)
2. For the **Scrap Bag Back**, cut a piece of pattern tracing material at least 12 1/2" wide by 12" high. Cut another piece 12 1/2" wide by 11" high for the **Scrap Bag Front**.
3. Mark a center line parallel to the 11" edge and 6 1/4" inches away. (Fig. 2)
4. Place the **Bottom of Scrap Bag Back** pattern under the tracing material near the bottom. Align the center line of the pattern with the line marked on the tracing material. Pin in place. Trace the pattern. (Fig. 3)
5. Remove the pattern piece.
6. Label the traced pattern.
7. Place the **Top of Scrap Bag Back** under the tracing material. Align the center line of the pattern with the line marked on the tracing pattern and the bottom of the blue portion of the pattern with the top edge of the pattern bottom. Trace the pattern. (Fig. 4)
8. Remove the pattern piece.
9. Fold the pattern tracing material in half along the center line. Trace the second half of the pattern. (Fig. 5)
10. Mark a center line parallel to the 12 1/2" edge and 6 1/4" away on the second piece of pattern tracing material.
11. Repeat the above steps to trace the **Scrap Bag Front**. Be sure to trace the line marked **Design Center** all the way across the pattern. Label the traced pattern. (Fig. 6)
12. For the **Bed Caddy Front**, cut a piece of pattern tracing material at least 10" wide by 9-3/4" high. Cut another piece 10" wide by 10" high for the **Scrap Bag Back**.
13. Draw a vertical center line for each pattern. Align the **Bed Caddy Front** pattern with the center line and trace the half pattern. Fold at center line to trace second half. Repeat for the **Bed Caddy Back** pattern. Be sure to add the horizontal centering line to the **Bed Caddy Front** pattern.



Embroider and Cut Scrap Bag Pieces (See later section for Bed Caddy instructions):

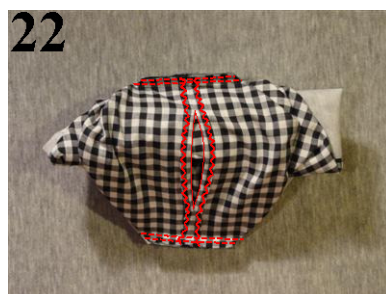
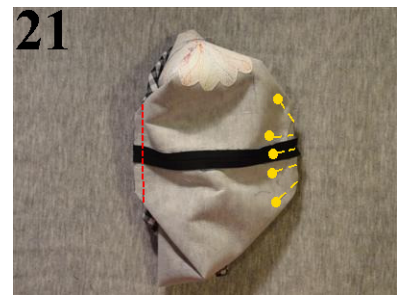
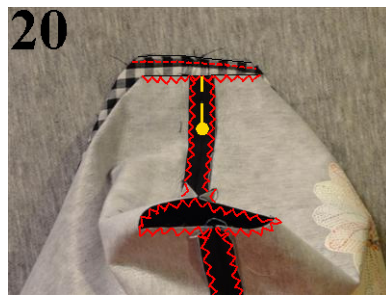
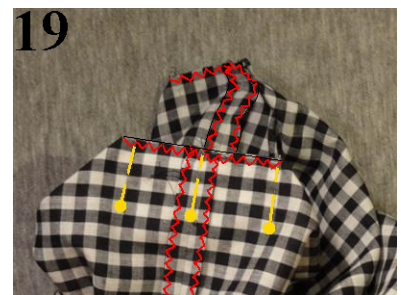
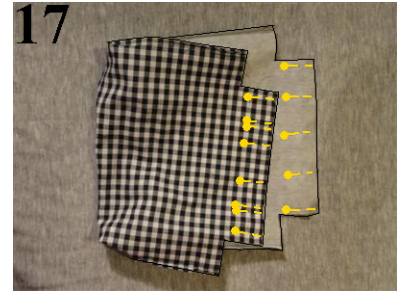
1. Fuse interfacing or fleece to the back of your outer fabric, following instructions on interfacing or fleece label.
2. On the right side of the fabric, mark a center line parallel to the 22" edge and 6 1/4" away. Mark a line parallel to the 12 1/2" edge and 6" from the bottom. Mark an arrow in a corner to show which end is up. (Fig. 7)
3. Hoop stabilizer and center fabric on top OR hoop stabilizer and fabric together. Fix-baste fabric in place. Center your swirl design at the intersection of the centering lines. Embroider the design. (Fig. 8)
4. Remove fix-baste stitches and trim away excess stabilizer.
5. Place the **Scrap Bag Front** on the embroidered fabric, aligning the centering lines with the lines on the pattern. Pin in place. Pin the **Scrap Bag Back** on the fabric, aligning the vertical centering line with the center of the pattern piece. (Fig. 9)
6. Cut out the pattern pieces. Remove patterns.
7. Place pattern pieces on lining fabric in same arrangement. Make sure patterns are on grain. If your fabric is striped or plaid, match the print at the sides and bottom of the patterns. (Fig. 10)
8. Cut out the pattern pieces. Remove patterns. If you can't tell the right from the wrong side of the fabric, mark the wrong sides with chalk.



Assemble the Scrap Bag:

1. See section on **Optional Additions** before assembling your scrap bag.
2. Finish all raw edges with a multi-step zigzag stitch. Put outer bag pieces right sides together. Pin side seams only. Repeat for lining pieces, matching print if necessary. (Fig. 11)
3. Stitch 3/8" seams. (Fig. 12)
4. Press seams open. (Fig. 13)
5. Turn the outer bag right side out. Slip it inside the lining and match upper edge and side seams.
6. Pin together with the pins on the outer bag. (Fig. 14)
7. Stitch a 3/8" seam, pivoting at inner and outer corners. Trim outer corners as shown by red diamond. Clip inner corners as shown by red line. Press outer bag seam allowances toward the outer bag. (Fig. 15)

8. Turn the bag so the right side of the lining faces out. Press top seam flat. Top stitch along the edge with the outer bag facing up under the needle. (You will be stitching from the inside of the bag.) (Fig. 16)
9. Turn the bag wrong side out. Pin the outer front and back pieces together at the bottom seam. Pin the lining front and back pieces together at the bottom seam, this time placing two pins together about an inch from each end. (These “gates” are meant to remind you to change stitch length in the next step.) (Fig. 17)
10. Stitch a 3/8” seam at the bottom of the lining as follows: Start at one end, and backstitch to secure. Stitch (2.5 mm stitches) to the first “gate.” Back stitch to secure. Baste (6 mm) to the second “gate.” Back stitch to secure. Stitch (2.5 mm) to the end of the seam. Back stitch to secure.
11. Snip top and bobbin threads at the beginning and end of the basted section.
12. Stitch a 3/8” seam at the bottom of the outer bag, back stitching at beginning and end to secure. (Fig. 18)
13. Press seams open, using a wooden spoon or dowel as a pressing aid.
14. Refold each lining corner so that the side and bottom seams are stacked. Pin together. (Fig. 19)
15. Stitch 1/4” seams along the raw edges at the corners.
16. Fold one outer corner so that the side and bottom seams are stacked and the bottom seam is facing up. Pin together at the seam line. Bring the lining corner up behind the outer corner. (Fig. 20)
17. Align all layers at raw edge and corner folds. Pin together. Stitch a 3/8” seam, back stitching at beginning and end to secure. Repeat for the opposite corner, bunching up the bag in between as needed. Figure 21 shows the first corner seam has been stitched and the second is pinned and ready.
18. Turn the bag lining side up. Remove the basting from the lining bottom. (Fig. 22)
19. Carefully pull the outer bag through the opening in the lining. Turn the bag so that the right side of the lining faces out. (Fig. 23)
20. Pin the folds at the lining opening together. (Fig. 24)
21. Slip stitch by hand or edge stitch by machine. (You’ll have to squish the bag flat to fit it under your presser foot.)
22. Turn the bag right side out. If desired, you may press creases at the corners of the bag, using the bottom seams and the top angled corners as guides. (Fig. 25)

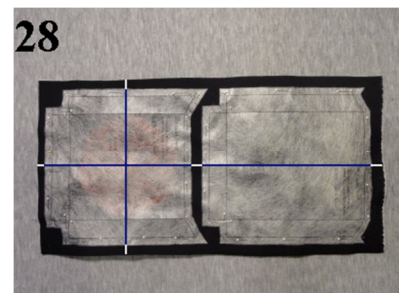
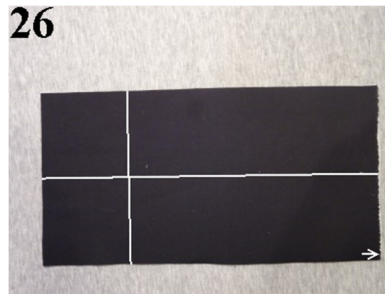


Optional Additions:

1. Add grommets to the top of the **Scrap Bag back**, to allow the **Scrap Bag** to be hung from hooks.
2. Stitch Velcro to the back of the **Scrap Bag**, and glue the opposite portion to your table.
3. Create a fabric loop. Place it on the right side of the back of the **Scrap Bag** with the raw edges of the loop even with the raw edges of the **Scrap Bag Back**. Baste in place within the seam allowance. The loop will be caught in the seam when you attach the lining.
4. Create a tab to sew onto the top edge of the **Scrap Bag Back** as for the loop. You can attach a weight and/or a pin cushion to the tab.
5. For the **Bed Caddy**, create a longer tab that you can tuck between your mattress and box spring. See instructions below for constructing and adding the tab.
6. If you have cabinet handles on your headboard, you can make a tab with Velcro or a snap. Attach the other piece of Velcro or snap to the **Bed Caddy Back**.
7. Make a tab with Velcro to wrap around the handle of a walker.
8. Paint the top of the **Bed Caddy** lining with glow in the dark paint or add glow in the dark piping if you can find it. I suggest painting the lining after construction so you don't have to worry about pressing the paint with your iron.
9. Use the larger **Scrap Bag** pattern for a **Bed Caddy** big enough to hold a book. Add the tab as described below, making it 6" wide instead of 5" wide.
10. Add pockets to the right side of the lining pieces before sewing lining side seams.

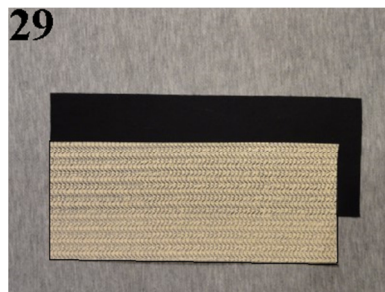
Embroider and Cut Bed Caddy Pieces:

1. Fuse interfacing or fleece to the back of your outer fabric, following instructions on interfacing or fleece label.
2. On the right side of the fabric, mark a center line parallel to the 19-1/2" edge and 5" away. Mark a line parallel to the 10" edge and 5" from the bottom. Mark an arrow in a corner to show which end is up. (Fig. 26)
3. Hoop stabilizer and center fabric on top OR hoop stabilizer and fabric together. Fix-baste fabric in place. Center your swirl design at the intersection of the centering lines. Embroider the design. (Fig. 27)
4. Remove fix-baste stitches and trim away excess stabilizer.
5. Place the **Bed Caddy Front** on the embroidered fabric, aligning the centering lines with the lines on the pattern. Pin in place. Pin the **Bed Caddy Back** on the fabric, aligning the vertical centering line with the center of the pattern piece. (Fig. 28)
6. Cut out the pattern pieces. Remove patterns.
7. Place pattern pieces on lining fabric in same arrangement. Make sure patterns are on grain. If your fabric is striped or plaid, match the print at the sides and bottom of the patterns. See Figure 10 above.
8. Cut out the pattern pieces. Remove patterns. If you can't tell the right from the wrong side of the fabric, mark the wrong sides with chalk.

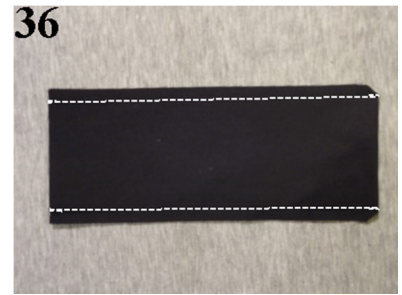
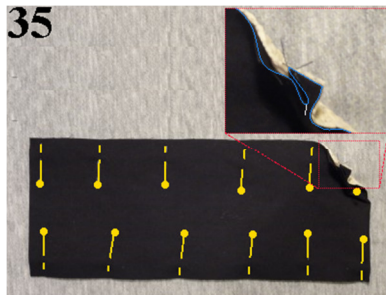
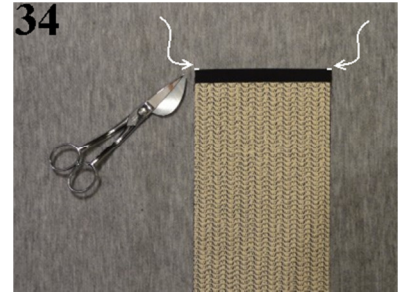
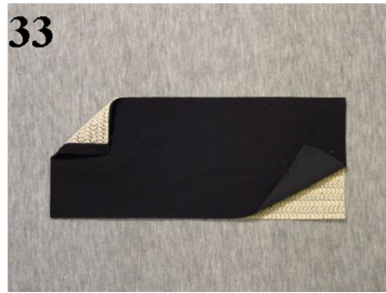
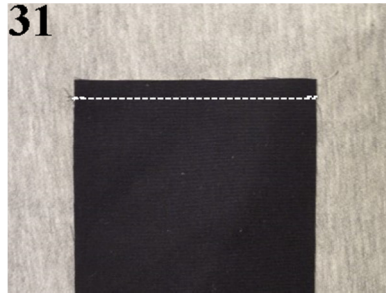


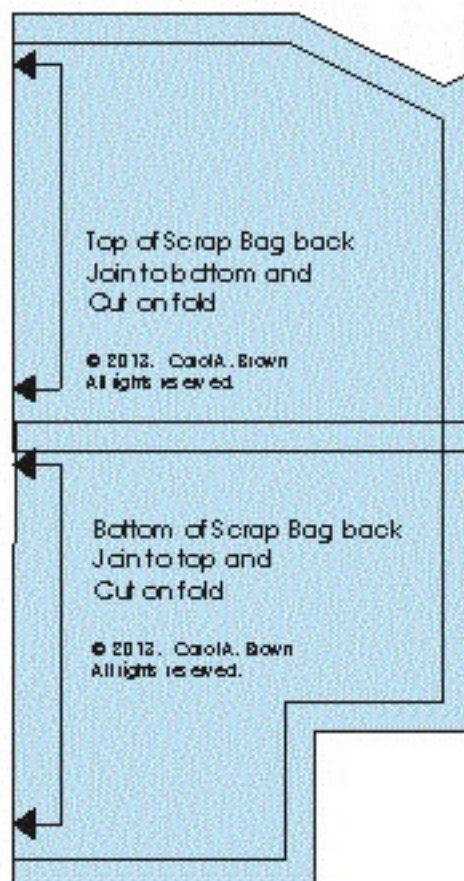
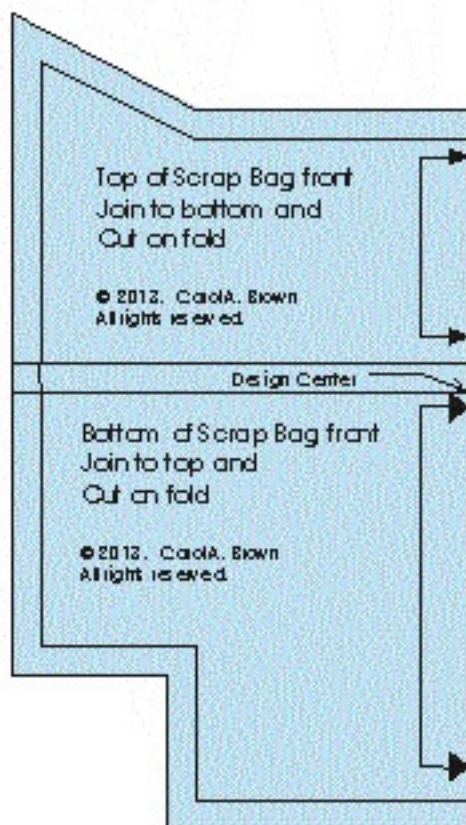
Construct and Attach Tab for Bed Caddy:

1. Cut a piece of outer fabric 5" wide by 13" long.
2. Cut a piece of non-slip Jiffy Grip™ fabric or shelf liner 5" wide by 12" long. (Fig. 29)
3. Right sides together, pin the two fabrics together at one short end. Pin so that you will sew with the outer fabric on top. (Fig. 30)



4. Stitch a 3/8" seam, backstitching at the start and end of the seam to secure. (NOTE: If you use shelf liner, you may need to use your left hand to lift the shelf liner away from the bed of the machine. This works better than sewing with the shelf liner face up, even with a Teflon foot.) (Fig. 31)
5. Press seam allowances toward the outer fabric. Be sure to use a press cloth to protect your iron, especially if you use shelf liner. (Fig. 32)
6. Flip outer fabric over the top of the non-slip fabric and bring the free short end to meet the short end of the non-slip fabric. The outer fabric wraps around the top of the non-slip fabric. With the outer fabric on top, press a crease at the top edge. (Fig. 33)
7. Make small snips (up to 1/4" long) at the edges of the crease. (Fig. 34)
8. Turn the tab wrong side out. Fold the outer fabric so that the snips (and therefore the crease) are at the edge of the fabric. In the inset close-up in Figure 35, the white line shows the location of one of the snips. The blue line shows the raw edge of the outer fabric. Notice how the outer fabric doubles back on itself before continuing to the opposite short end. Pin fabric layers together along the two long edges.
9. Stitch 3/8" seams along the two long edges, backstitching at start and end to secure seams. Trim the corners at the crease diagonally. (Fig. 36)
10. Slip a sleeve board inside the tab. Using a press cloth to protect your iron, press the seams open. (Fig. 37)
11. Turn the tab right side out. Use a point turner tool to sharpen the corners. (Fig. 38)
12. With the outer fabric facing up, press tab flat.
13. Mark the center of the open short end with a pin, chalk mark, or small snip.
14. Stitch the side seams of the outer **Bed Caddy** as directed for the **Scrap Bag**. Press seams open.
15. Mark the center of the top edge of the **Bed Caddy Back** with a pin, chalk mark, or small snip. With the non-slip side toward the right side of the **Bed Caddy Back**, match the marks and pin together. Stitch together 1/4" from the raw edge. (Fig. 39)
16. Continue construction as directed for the **Scrap Bag**.





Design Center

Bottom of Scrap Bag front
Join to top and
Cut on fold

© 2013. Carol A. Brown
All rights reserved.





Bottom of Scrap Bag back
Join to top and
Cut on fold

© 2013. Carol A. Brown
All rights reserved.

