

Embroidered Scrap Bag

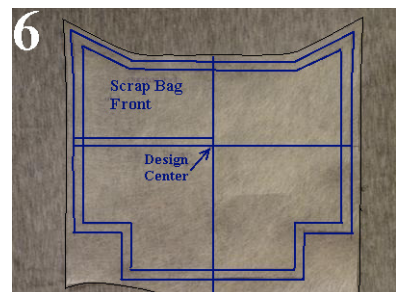
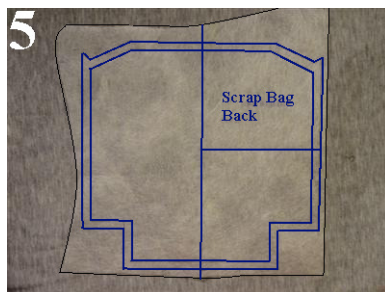
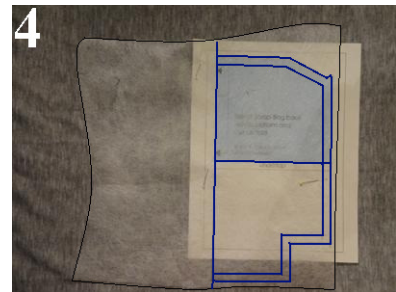
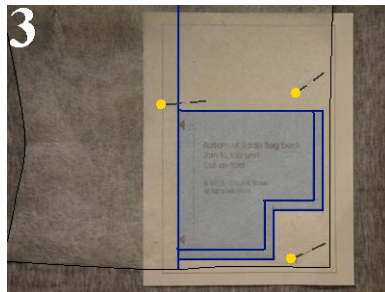
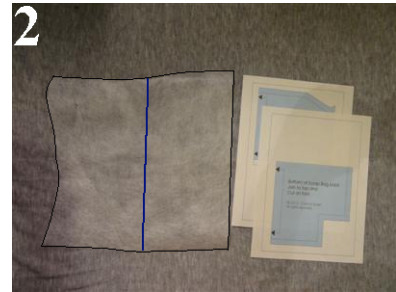
Carol A. Brown

Materials:

1. Outer fabric (sturdy fabric such as poplin): at least 12 1/2" wide by 22" high.
2. Medium weight fusible interfacing: same size as for fabric.
3. Lining (quilt fabric or other cotton): same size as for fabric, or more if you want to match a print.
4. *Fancy Swirls* design of your choice, 100mm x 100mm or 120mm x 120mm size.
5. Embroidery thread: 2 to 6 colors, depending on design.
6. Medium weight cutaway stabilizer: enough for embroidery hoop.
7. Regular sewing thread.
8. Removable marker or tailor's chalk (for right side of fabric).
9. Pattern tracing material.

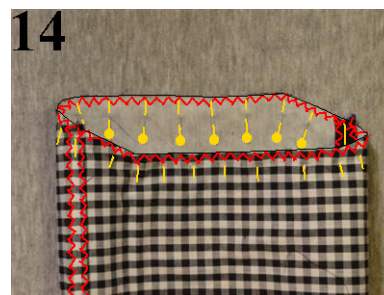
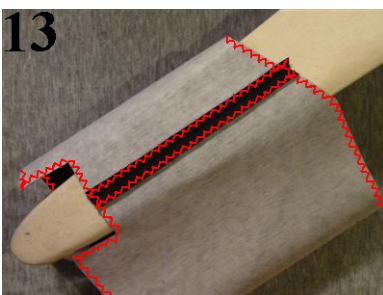
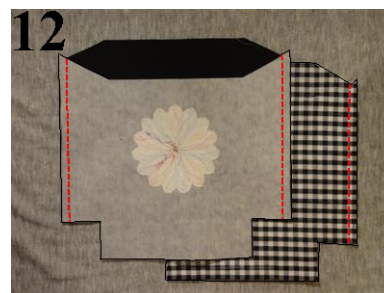
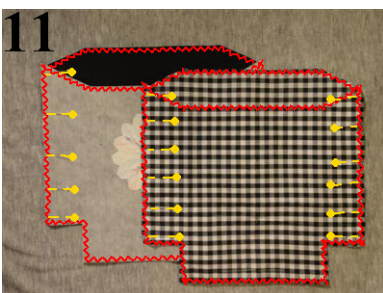
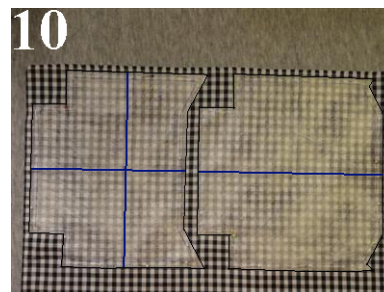
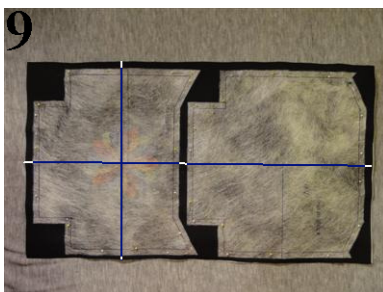
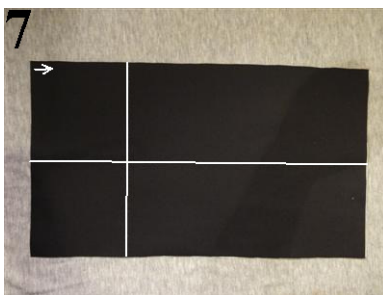
Prepare Pattern:

1. Print the final four pages of these instructions at full size. (Fig. 1)
2. Cut a piece of pattern tracing material at least 12 1/2" wide by 11" high. Cut another piece 12 1/2" wide by 12" high. (See end of section for using one piece for both patterns.)
3. Mark a center line parallel to the 11" edge and 6 1/4" inches away. (Fig. 2)
4. Place the Bottom of Scrap Bag Back pattern under the tracing material near the bottom. Align the center line of the pattern with the line marked on the tracing material. Pin in place. Trace the pattern. (Fig. 3)
5. Remove the pattern piece.
6. Label the traced pattern.
7. Place the Top of Scrap Bag Back under the tracing material. Align the center line of the pattern with the line marked on the tracing pattern and the bottom of the blue portion of the pattern with the top edge of the pattern bottom. Trace the pattern. (Fig. 4)
8. Remove the pattern piece.
9. Fold the pattern tracing material in half along the center line. Trace the second half of the pattern. (Fig. 5)
10. Mark a center line parallel to the 12 1/2" edge and 6 1/4" away on the second piece of pattern tracing material.
11. Repeat the above steps to trace the Scrap Bag Front. Be sure to trace the line marked Design Center all the way across the pattern. Label the traced pattern. (Fig. 6)
12. If you prefer, you can cut one piece of pattern tracing material 12 1/2" wide by 22" high. Trace the Scrap Bag Front at the bottom and the Scrap Bag Back at the top. The patterns will fit together as they do on the fabric. I happened to have the smaller pieces handy so that is what I used.



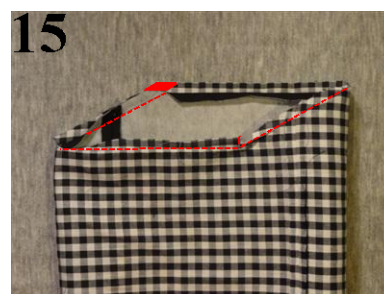
Embroider and Cut Scrap Bag Pieces:

1. Fuse interfacing to the back of your outer fabric, following instructions on interfacing label.
2. On the right side of the fabric, mark a center line parallel to the 22" edge and 6 1/4" away. Mark a line parallel to the 12 1/2" edge and 6" from the bottom. Mark an arrow in a corner to show which end is up. (Fig. 7)
3. Hoop stabilizer and center fabric on top OR hoop stabilizer and fabric together. Fix-baste fabric in place. Center your swirl design at the intersection of the centering lines. Embroider the design. (Fig. 8)
4. Remove fix-baste stitches and trim away excess stabilizer.
5. Place the Scrap Bag Front on the embroidered fabric, aligning the centering lines with the lines on the pattern. Pin in place. Pin the Scrap Bag Back on the fabric, aligning the vertical centering line with the center of the pattern piece. (Fig. 9)
6. Cut out the pattern pieces. Remove patterns.
7. Place pattern pieces on lining fabric in same arrangement. Make sure patterns are on grain. If your fabric is striped or plaid, match the print at the sides and bottom of the patterns. (Fig. 10)
8. Cut out the pattern pieces. Remove patterns. If you can't tell the right from the wrong side of the fabric, mark the wrong sides with chalk.



Assemble the Scrap Bag:

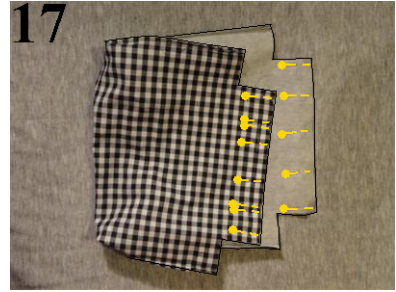
1. See section on **Optional Additions** before assembling your scrap bag.
2. Finish all raw edges with a multi-step zigzag stitch. Put outer bag pieces right sides together. Pin side seams only. Repeat for lining pieces, matching print if necessary. (Fig. 11)
3. Stitch 3/8" seams. (Fig. 12)
4. Press seams open. (Fig. 13)
5. Turn the outer bag right side out. Slip it inside the lining and match upper edge and side seams.
6. Pin together with the pins on the outer bag. (Fig. 14)
7. Stitch a 3/8" seam, pivoting at inner and outer corners. Trim outer corners as shown by red diamond. Clip inner corners as shown by red line. Press outer bag seam allowances toward the outer bag. (Fig. 15)



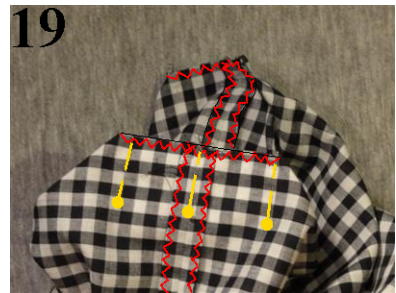
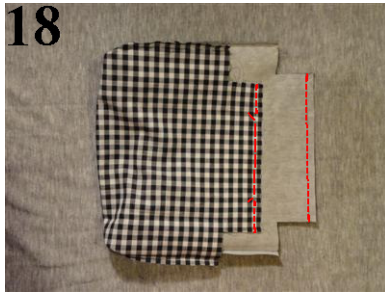
8. Turn the bag so the right side of the lining faces out. Press top seam flat. Top stitch along the edge with the outer bag facing up under the needle. (You will be stitching from the inside of the bag.) (Fig. 16)



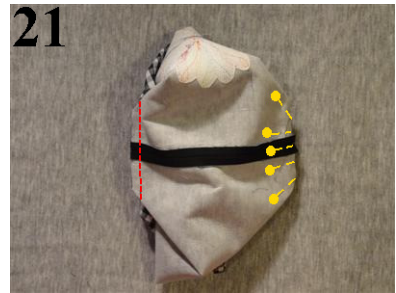
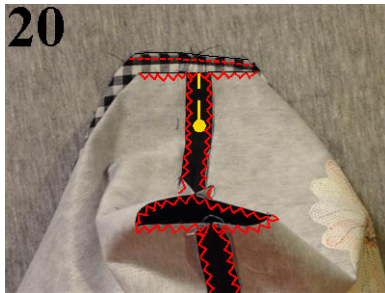
9. Turn the bag wrong side out. Pin the outer front and back pieces together at the bottom seam. Pin the lining front and back pieces together at the bottom seam, this time placing two pins together about an inch from each end. (These "gates" are meant to remind you to change stitch length in the next step.) (Fig. 17)



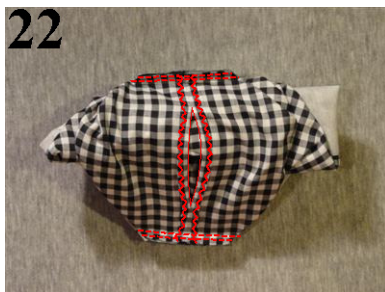
10. Stitch a 3/8" seam at the bottom of the lining as follows: Start at one end, and backstitch to secure. Stitch to the first "gate." Backstitch to secure. Baste to the second "gate." Backstitch to secure. Stitch to the end of the seam. Backstitch to secure.



11. Snip top and bobbin threads at the beginning and end of the basted section.



12. Stitch a 3/8" seam at the bottom of the outer bag, back stitching at beginning and end to secure. (Fig. 18)



13. Refold each lining corner so that the side and bottom seams are stacked. Pin together. (Fig. 19)

14. Stitch 1/4" seams along the raw edges at the corners.

15. Fold one outer corner so that the side and bottom seams are stacked and the bottom seam is facing up. Pin together at the seam line. Bring the lining corner up behind the outer corner. (Fig. 20)

16. Align all layers at raw edge and corner folds. Pin together. Stitch a 3/8" seam, back stitching at beginning and end to secure. Repeat for the opposite corner, bunching up the bag in between as needed. Figure 21 shows the first corner seam has been stitched and the second is pinned and ready.

17. Turn the bag lining side up. Remove the basting from the lining bottom. (Fig. 22)

18. Carefully pull the outer bag through the opening in the lining. Turn the bag so that the right side of the lining faces out. (Fig. 23)

19. Pin the folds at the lining opening together. (Fig. 24)

20. Slip stitch by hand or edge stitch by machine. (You'll have to squish the bag flat to fit it under your presser foot.)

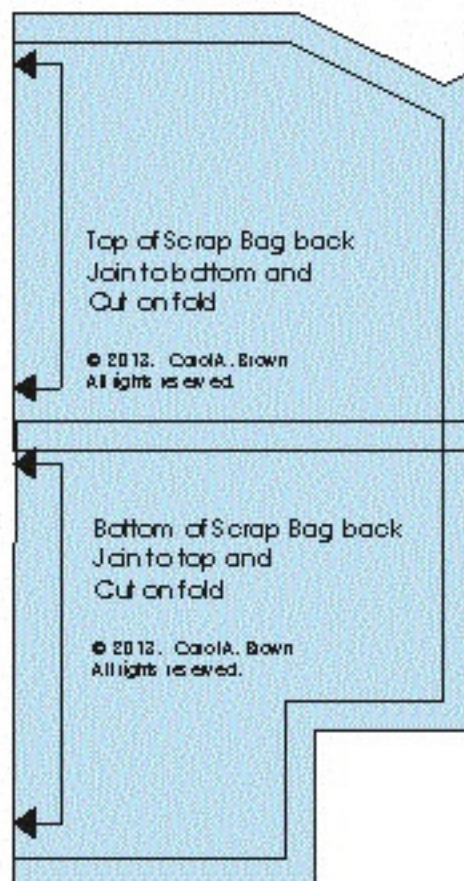
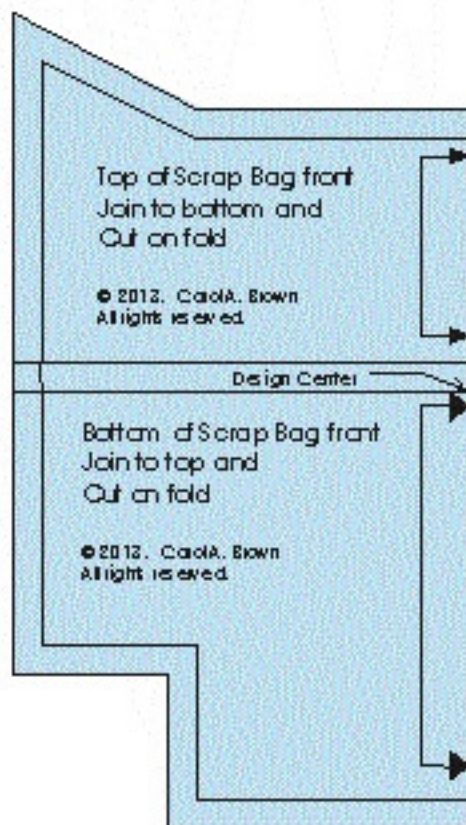


21. Turn the bag right side out. If desired, you may press creases at the corners of the bag, using the bottom seams and the top angled corners as guides. (Fig. 25)

Optional Additions:

1. Add grommets to the top of the bag back, to allow the scrap bag to be hung from hooks.
2. Stitch Velcro to the back of the scrap bag, and glue the opposite portion to your table.
3. Create a fabric loop and baste it to the center of the top edge at the back of the bag. Place the raw edges of the loop even with the raw edges of the scrap bag back. The loop will be caught in the seam.
4. Create a tab to sew onto the top edge of the back of the bag as for the loop. You can attach a weight and/or a pin cushion.





Design Center

Bottom of Scrap Bag front
Join to top and
Cut on fold

© 2013. Carol A. Brown
All rights reserved.





Bottom of Scrap Bag back
Join to top and
Cut on fold

© 2013. Carol A. Brown
All rights reserved.