

# Sewing Instructions for Pinny Pocket

Carol A. Brown

Make this Pocket for a smart phone and then attach it to the Pinny shown in this blog (see separate instructions). An opening in the pocket allows the user to plug headphones into the phone. The pocket can also be attached to a jacket or beach blanket or any other item in which you would want to keep your phone secure.

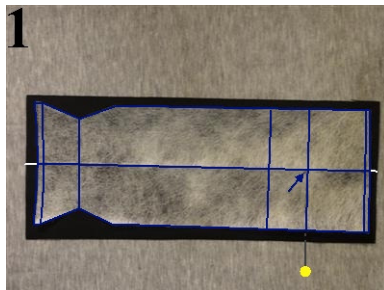
In many of the photographs below, the pocket is positioned sideways in order to fit the photo dimensions. *Vertical* and *horizontal* refer to directions as they occur on the pocket itself, not how they appear in the photos.

## Materials:

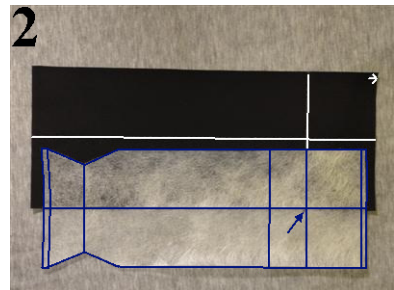
1. **Pinny Pocket** pattern drafted according to *Prepare Pattern for Pocket Pinny* document.
2. Pocket: sturdy but light fabric such as poplin, 1" larger in each dimension than the **Pinny Pocket** pattern. (If you prefer to hoop your fabric with the stabilizer, then you will need a larger piece of fabric.)
3. Lightweight fusible interfacing: same size as for pocket fabric.
4. Lining (nylon Ripstop or other slippery fabric): to fit pattern, minus the tab facing. See instructions.
5. **Contour Print** lettering of your choice, up to 90 mm wide x 62 mm high.
6. Embroidery thread: as required by design.
7. Regular sewing thread.
8. 3/4" wide Snag-free Velcro: 5" (or 2 1/2" each of Velcro hook tape and Velcro loop tape).

## Embroider and Cut Pocket Pieces:

1. Fuse interfacing to the wrong side of your pocket fabric, following instructions on interfacing label.
2. On the right side of the fabric, mark a center line parallel to the longer edge of the fabric. Center the pocket pattern on the fabric. Note the location of the horizontal centering line with a pin. (Fig. 1)



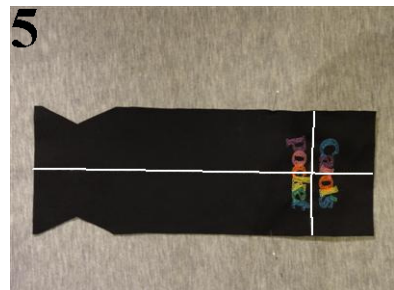
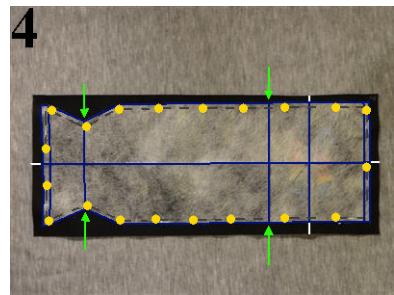
3. Mark a line at that location, perpendicular to the first line. Make a small arrow pointing toward the short edge that is nearest the centering line. (Fig. 2)



4. Hoop stabilizer and center fabric on top OR hoop stabilizer and fabric together. Center your design at the intersection of the centering lines. Fix-baste fabric in place. Stitch your design, making sure the top of the design is toward the arrow. (Fig. 3)



5. Remove fix-baste stitches and trim away excess stabilizer.
6. Place the Pinny Pocket pattern on the embroidered fabric, aligning the centering lines with the lines on the pattern. Pin in place. Cut out the pocket. Make 1/8" long snips at both ends of the lines that mark the Bottom Front and Top of Tab, as shown by green arrows in Figure 4.
7. Unpin the pattern. (Fig. 5)
8. Fold under the tab facing. Keeping pins near the edges, pin the pattern

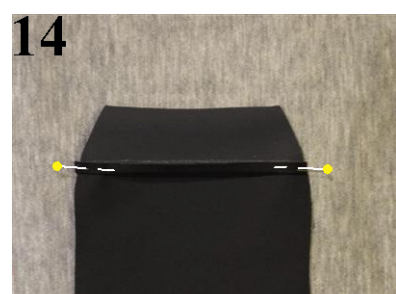
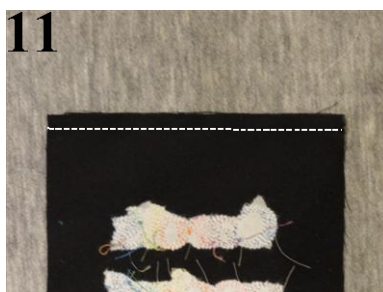
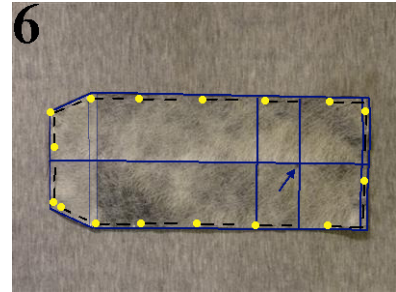


to the lining fabric. (Fig. 6)

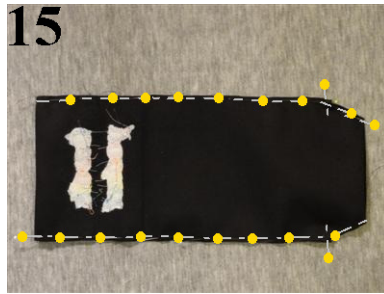
9. Cut out the lining. Unpin the pattern.

**Assemble the Pocket:**

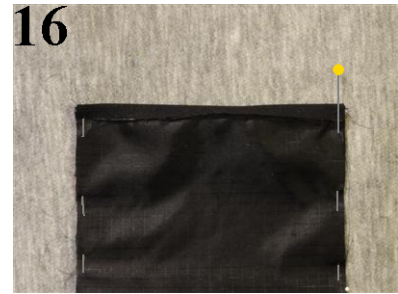
1. Turn the outer pocket wrong side up, with the tab end toward you. Mark a line parallel to and 1/2" away from the short edge. (Fig. 7)
2. Finish all raw edges of pocket and lining with a narrow zigzag stitch.
3. Place pocket wrong side up on ironing board. Fold the edge of the tab up to meet the marked line. Press crease. Fold the tab at the snips and press a crease. Fold the opposite end of the pocket up at the snips and press a crease. Arrows in Figure 8 mark the locations of the creases.
4. Figure 9 shows the pocket folded at all creases.
5. Place the pocket and the lining right sides together. Pin at the Top Seam (near the embroidery). (Fig. 10)
6. Stitch a 1/4" seam along the top edge only. (Fig. 11)
7. Press seams toward the lining. Stitch near the seam through all layers (under stitch). (Fig. 12)
8. Fold right side out at the seam and press flat. (Fig. 13)
9. Fold the pocket right side together at the Top of Tab. Fold up the hem at the bottom of the tab. (The area between the creases will be the tab's facing.) Pin through all layers with the pin heads facing out. (Fig. 14)



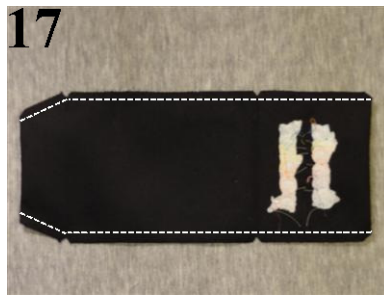
10. Fold the pocket right sides together at the seam. Pin together on the two long sides. (Fig. 15)



11. At the seam, make sure the seam allowances face the lining and are lying flat. (Fig. 16)



12. Stitch 1/4" seams backstitching at start and end to secure. Trim seams at corners and at folds. (Fig. 17)



13. Press the seam allowances toward the lining. (Fig. 18)



14. Turn pocket right side out through the opening at the tab end of the pocket. Slip a bamboo pointer and creaser inside the pocket. Poke at the corners to sharpen them. (Fig. 19)



15. Remove the bamboo tool. Press flat. (Fig. 20)



16. Turn the tab facing right side out. Sharpen the corners and press flat. Top stitch on the facing near the fold of the hem. HINT: Since the side that will show on the pocket is toward the bobbin for this seam, take a little extra care to keep the stitching neat. Holding onto both thread tails when you start stitching will keep them from tangling into a nest. Stitch forward and then backward to lock the seam. Secure the end of the seam as well. (Fig. 21)



17. Mark the center of the tab facing and the outside of the top of the pocket. Center a 2 1/2" strip of Velcro 1/8" from the edge of each area. Zigzag in place. (Fig. 22)



18. Would you like to connect headphones to your phone while it is in the pocket? The remaining instructions give you options for creating an opening.



19. If the phone's headphone jack is at the top of your phone, a buttonhole will give you access.



20. Place your pocket on the table lining side up. Place the phone on top and fold up the front of the pocket. The pressed crease should be at the bottom of the phone. (Fig. 23)

21. Fold down the tab and fasten the Velcro. Locate the headphone jack through the fabric. Mark a horizontal line that is wide enough to give you access to the jack. If your phone is in a protective shell that has a flap over the jack, you may need a very wide buttonhole. (Fig. 24)

22. Open the pocket. Add perpendicular lines to show the ends of the buttonhole. (Fig. 25)

23. Stitch and open the buttonhole. (Fig. 26)

24. If the headphone jack is at the bottom of the phone, mark and stitch the buttonhole where it is needed.

25. If the headphone jack is on the side of the phone, you can leave a gap in the side seam as shown in Figure 27. You will stitch the side seams when you attach your pocket to your pinny or other project. See the **Pocket Pinny** instructions for more information.

