

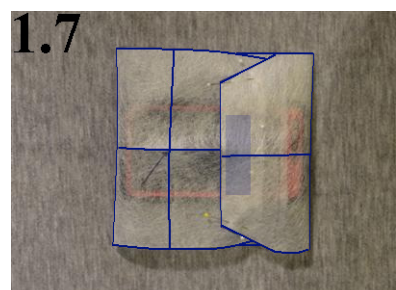
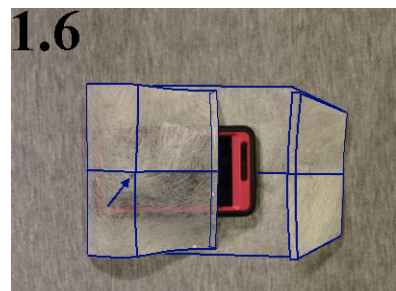
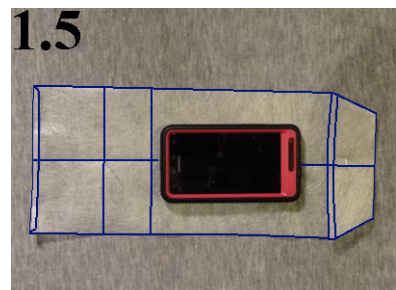
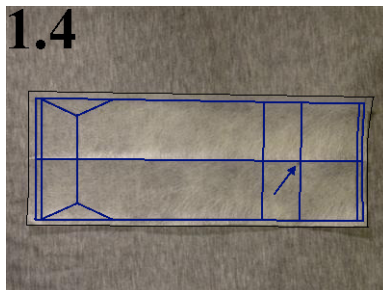
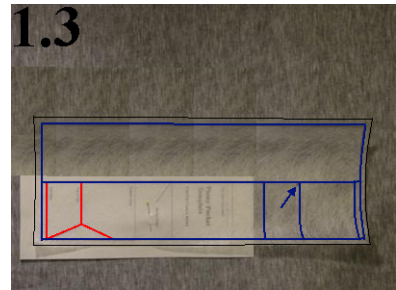
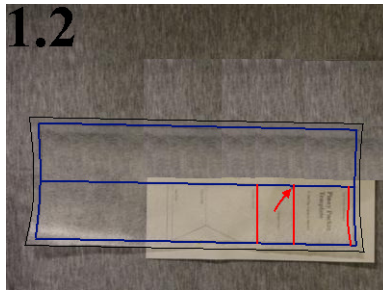
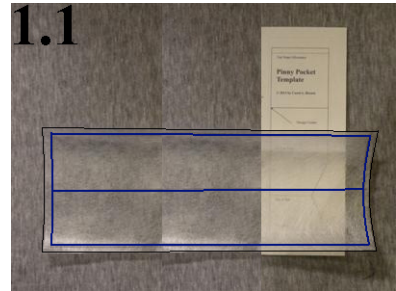
Prepare Patterns for Pocket Pinny

Carol A. Brown

Please draft these patterns for the pocket and the pinny before buying materials for the project. Doing so will give you a better idea of the quantities you will need.

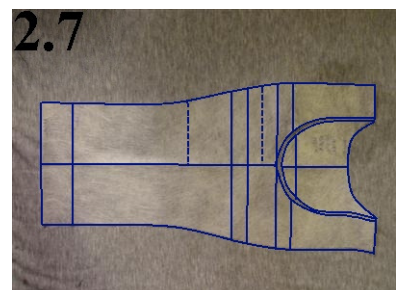
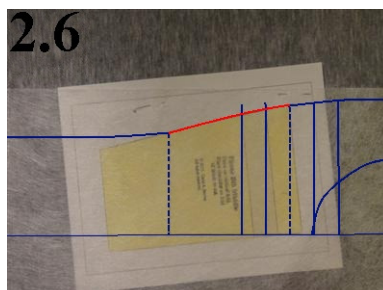
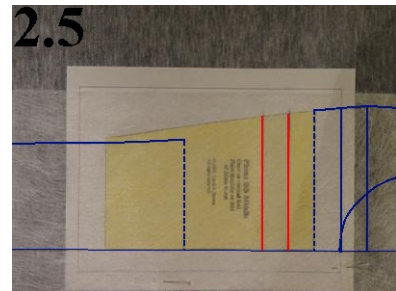
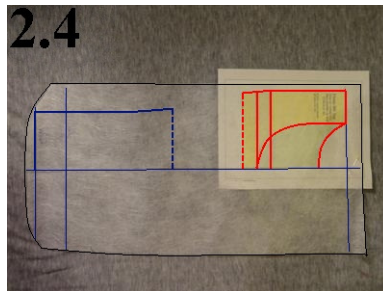
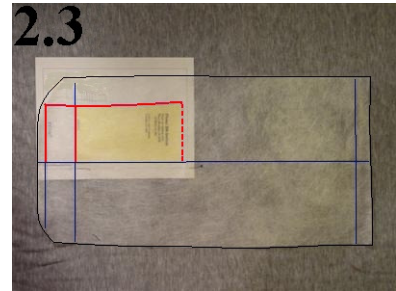
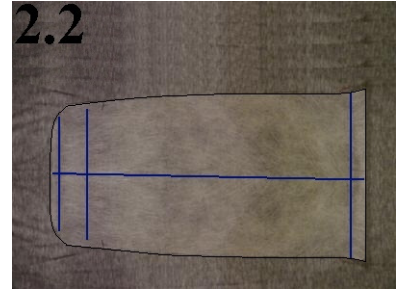
1 Prepare Pocket Pattern:

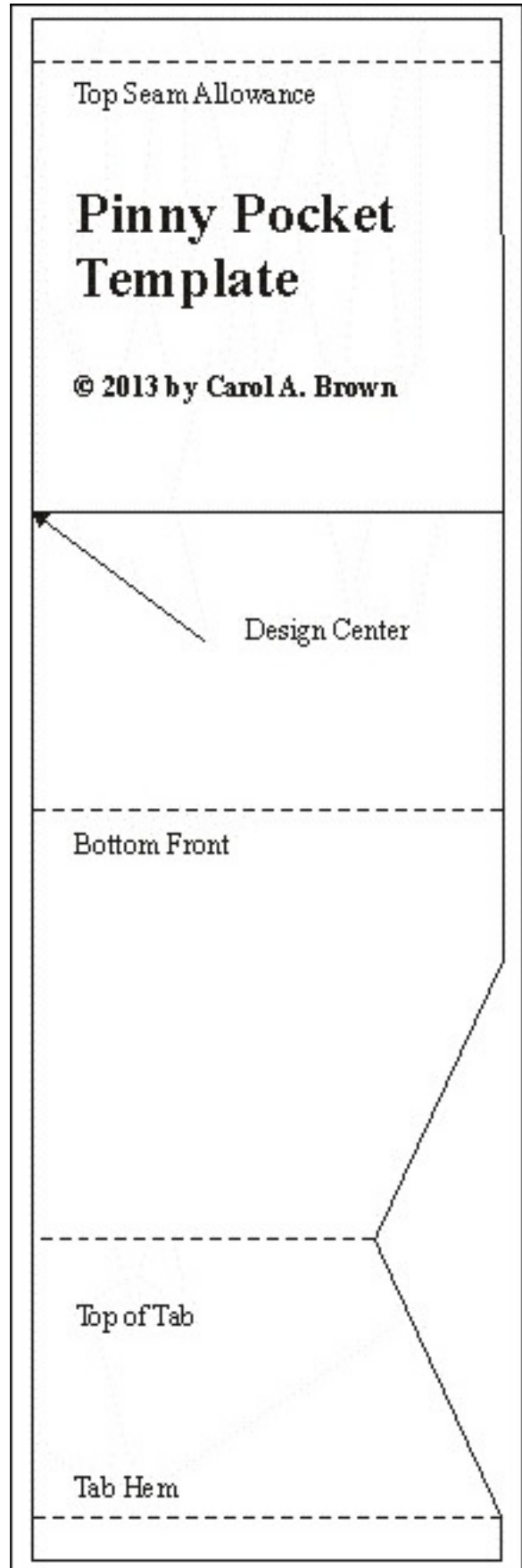
1. Print the Pinny Pocket Pattern at full size.
2. If you use a protective shell for your phone, take the following measurements with the shell in place.
3. Measure the horizontal circumference of the phone in inches. Divide by 2 and then add 2" to the result. This will be the width of the pattern. Write the total here: _____. (My phone's horizontal circumference is 7". I added 2" to 3 1/2" (half of 7") to get a pattern width of 5 1/2".)
4. Measure the vertical circumference of the phone in inches. Add 3 1/2". This will be the height of the pattern. Write the total here: _____. (My phone's vertical circumference is 11 1/2". I added 3 1/2" to get a pattern height of 15".)
5. Cut a piece of pattern tracing material slightly larger than the dimensions calculated in steps 3 and 4.
6. Draw a rectangle with these dimensions on the pattern tracing material. (Mine is 5 1/2" x 15".)
7. Draw a line at the vertical center of the rectangle. (Fig. 1.1)
8. NOTE: The pattern is shown sideways in these instructions to better fit photo dimensions. "Vertical" and "horizontal" refer to the dimensions as the pattern will be used.
9. Pin the Pinny Pocket Template to the top right corner of your rectangle. Transfer markings for the Top Seam Allowance, Design Center (horizontal line and arrow), and Bottom Front to your pattern tracing material. (Fig. 1.2)
10. Slide the Pinny Pocket Template to the bottom right corner and pin in place. Transfer the markings for the angled side edges, the Tab Hem, and the Top of Tab. Unpin the template. (Fig. 1.3)
11. Fold the pattern in half along the vertical center. Transfer markings to the other half of your pattern. (Fig. 1.4)
12. Cut out the pattern.
13. Fold the Top Seam Allowance to the wrong side. Fold at the top of Tab. Place your phone above the line indicating Bottom Front. (Fig. 1.5)
14. Fold the front of the pattern up and over over the phone, with the line positioned at the bottom of the phone. (Fig. 1.6)
15. Fold the tab down and over the phone. Confirm that you have at least 1" overlap between the Top of Tab and the Top Seam Allowance lines. (This overlap is necessary for the pocket's Velcro closure. If the overlap is smaller you can use narrower Velcro or enlarge the pattern.) Also confirm that 1 1/4" of the pocket is visible above the horizontal Design Center line. If not, then use a shorter design. (Fig. 1.7)



2 Prepare Pinny Pattern:

1. Print the three Pocket Pinny Pattern pages at full size. (Fig. 2.1)
2. Place a belt around your waist or midriff at the level at which you want your pinny to end.
3. Measure from your shoulder down your back to the bottom of the belt. Add 2" to this length and write the total here. _____ (*My back measurement is 18" so 20" is my total.*)
4. Measure from your shoulder down your chest to the bottom of the belt. Add 2" to this length and write the total here. _____ (*My front measurement is 20" so 22" is my total.*)
5. Cut a piece of pattern tracing material at least 12" wide by your larger total (plus 1" extra so you will have space at top and bottom for drawing the pattern). (*My tracing material is about 12" x 23".*)
6. Mark a center line parallel to the long edge.
7. Mark end lines perpendicular to the center line spaced according to whichever measurement from steps 3 and 4 is larger. If your lengths are different, add a second line at one end, showing the shorter distance. (*My end lines are 22" apart so I added another line 20" from the top.*) (Fig. 2.2)
8. If your length in step 7 is greater than 23" (the total length of the pattern sections put together), then mark another line 23" from the end. Mark this line or draw it with a different color of ink.
9. Place the Pocket Pinny Bottom pattern under the pattern tracing material so that the bottom edge is positioned at the lowest of the marked lines and the right edge is aligned with the center line. (If your front and back lengths are the same, then you have only one line to use.) Pin in place. Trace the part of the pattern that falls between the bottom line and the second line or 23" line (whichever is farther from the bottom). Unpin the pattern and move it up so that its bottom is at the highest of the lines at the bottom of the pattern tracing material. Pin in place and trace the entire bottom section of the pattern. (If you have only one bottom line, then trace the entire section of the pattern beginning at that line.) (Fig. 2.3)
10. Place the Pocket Pinny Top pattern so that the top edge is at the opposite end of the pattern tracing material and the right edge is aligned with the center line. Pin in place. Trace the entire pattern section, including the lines for the reflective tape. (Fig. 2.4)
11. Place the Pocket Pinny Middle pattern so that its top edge meets the bottom of the drawn top section and the right edge is aligned with the center line. Pin in place. Trace the lines for the reflective tape. (Fig. 2.5)
12. If necessary, pivot the Pocket Pinny Middle pattern so that the left edge meets the sections above and below. Pin in place. Trace the left edge of the pattern. (Fig. 2.6)
13. Fold the pattern tracing material in half along the center line. Trace the second half of the pattern, including the two necklines and reflective tape lines. Cut out the pattern. Cut on the lower neckline and keep the smaller piece handy. (Fig. 2.7)



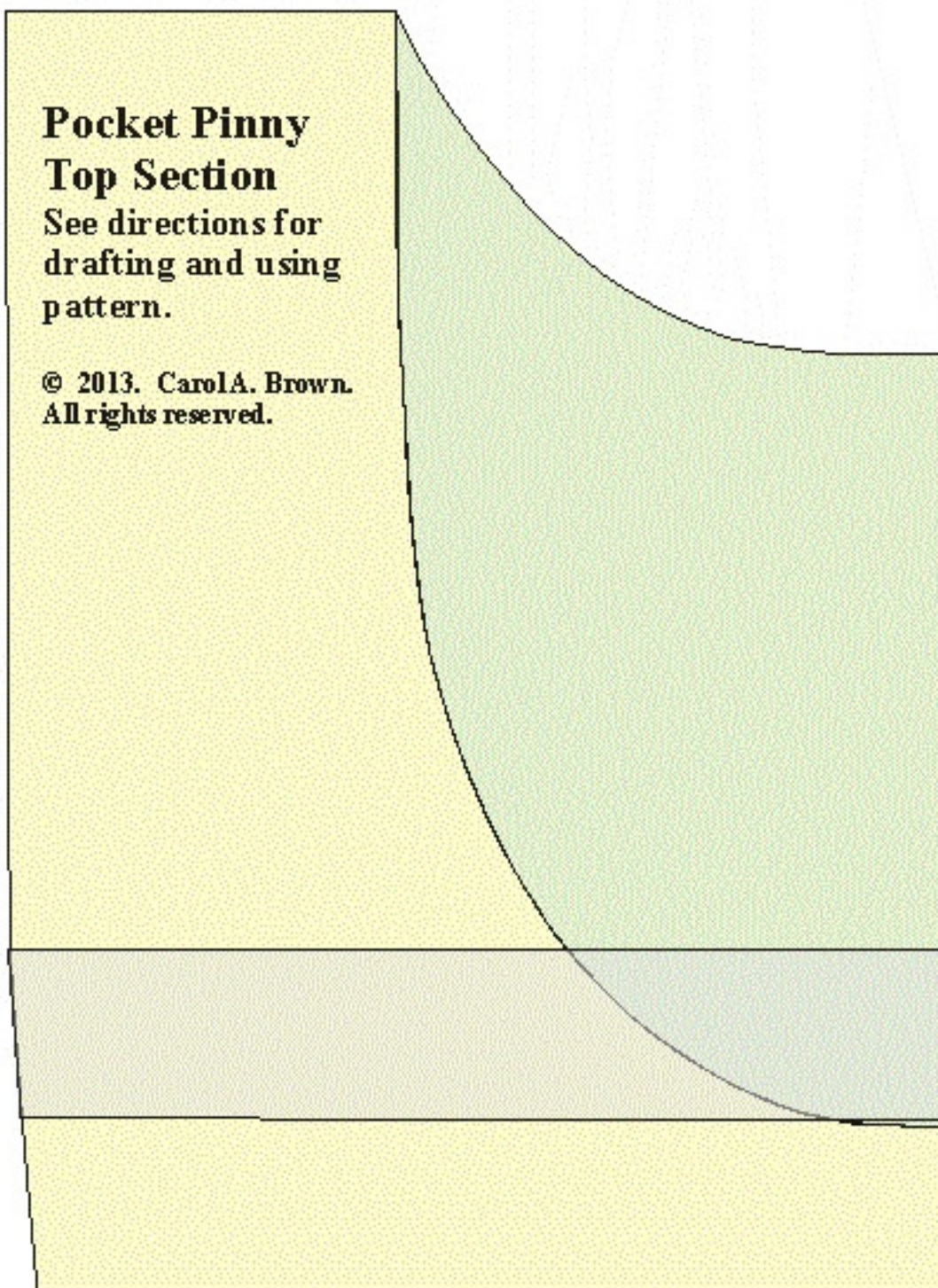


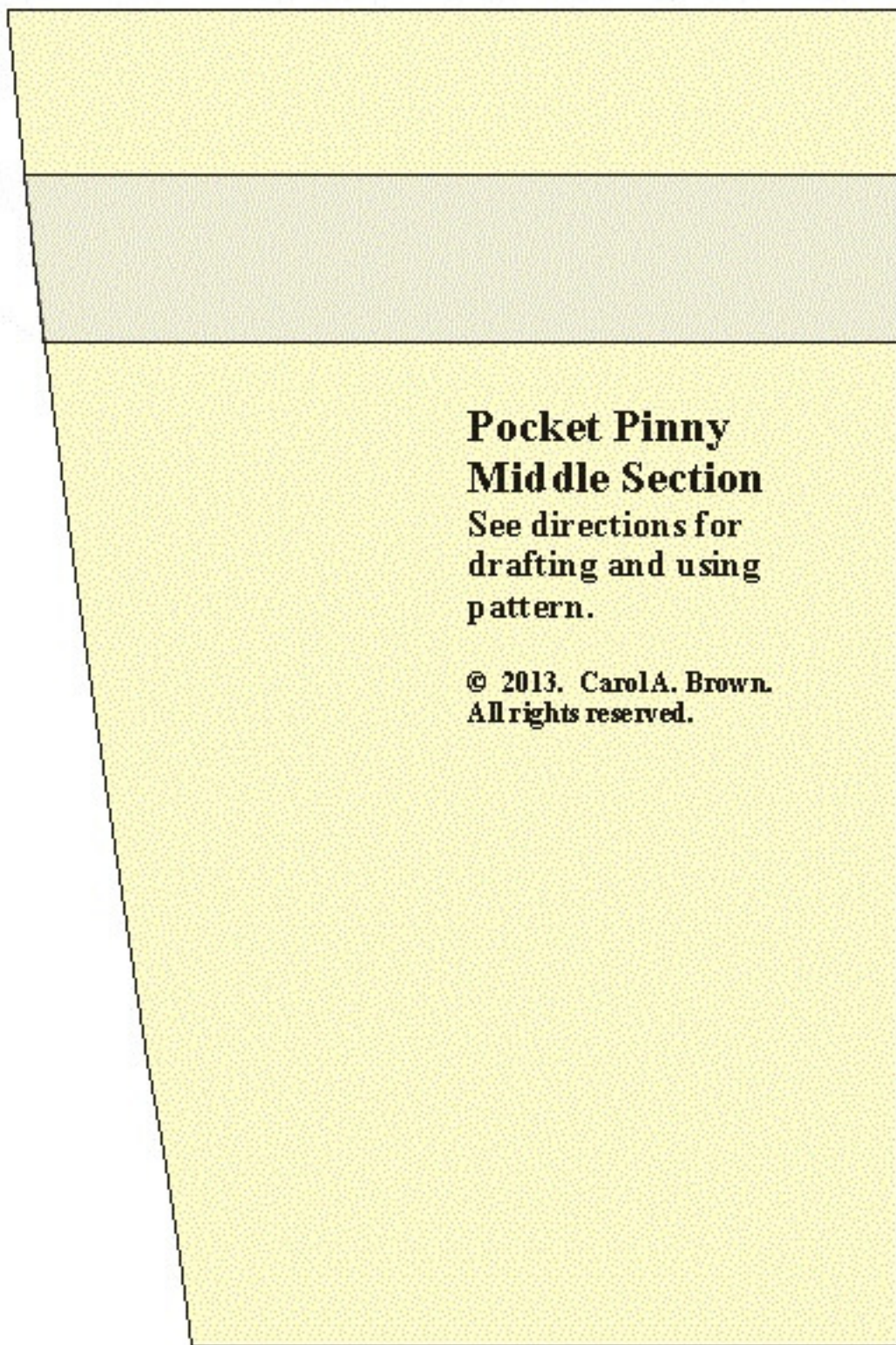
Pocket Pinny

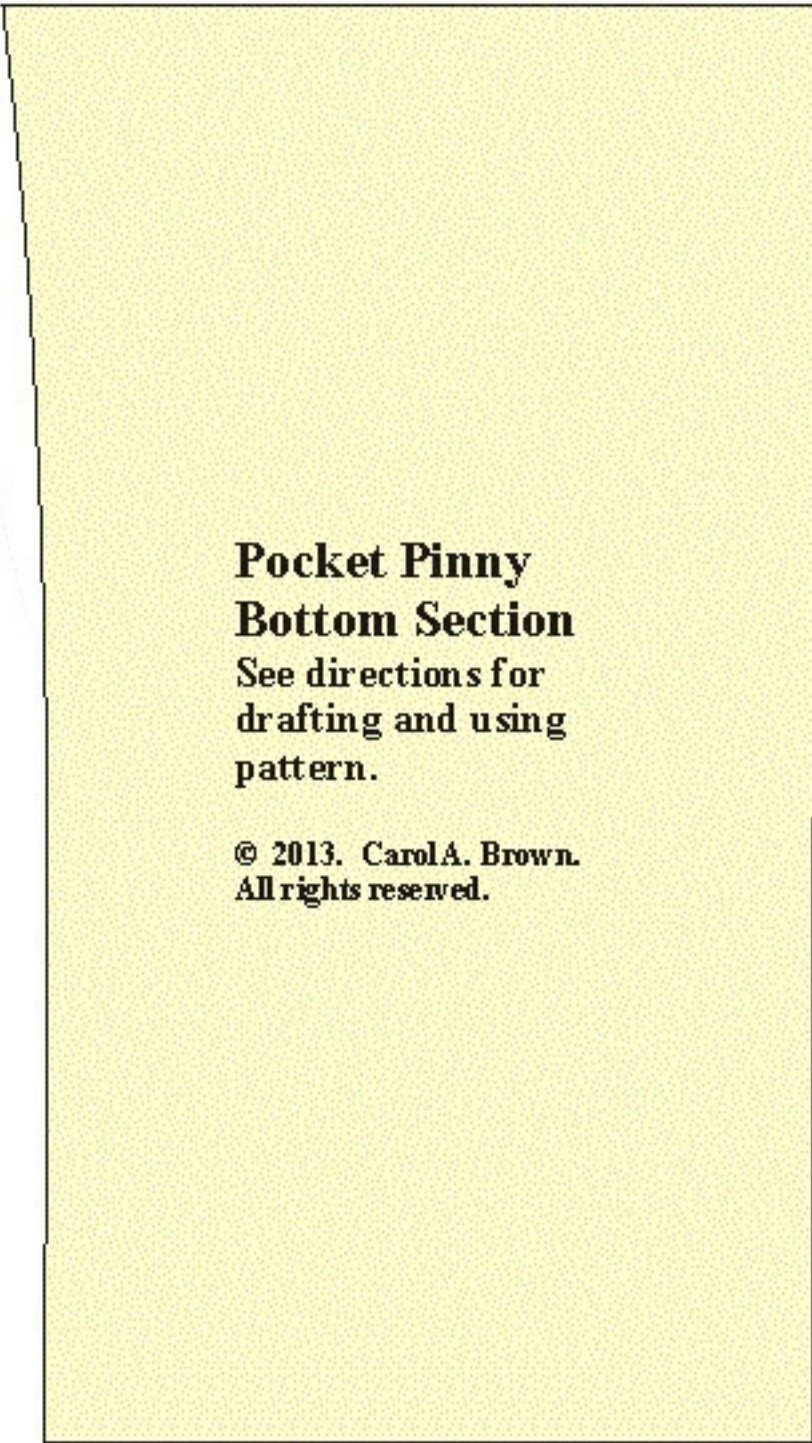
Top Section

See directions for
drafting and using
pattern.

© 2013. Carol A. Brown.
All rights reserved.







**Pocket Pinny
Bottom Section**
See directions for
drafting and using
pattern.

© 2013. Carol A. Brown.
All rights reserved.